



HARD WORKERS

NEED STRONGER PERFORMANCE

STRONGER PERFORMANCE SAVES YOU TIME

MARANGONI INDUSTRIAL TYRES ARE THE ONLY CHOICE for those who want maximum performance and minimum wear.

Those who work hard know how crucial time is. Continuous and extended use with no downtime for maintenance is a critical time saver.

This indisputable advantage combined with high quality compounds and raw materials that extend the tyre's lifespan allows us to achieve another key result: a reduction in costs.

The wide range of Marangoni products is able to meet any and all requirements in terms of reliability, performance and safety.

Guaranteed return for a long-term investment.

A SINGLE RESPONSE TO ALL YOUR NEEDS: PERFORMANCE

IMPROVE EFFICIENCY

Constant performance levels, limited wear, plus comfort, stability and excellent loading capacity guarantee higher efficiency even for heavy duty forklifts.

CHOOSE THE BEST PRODUCT

Many of the leading manufacturers of forklifts and industrial vehicles have chosen Marangoni as their original equipment supplier and have cooperated with the Research and Development Centre to develop their products according to different needs: efficiency, safety, and comfort. Users can benefit from the wide range of products offered by Marangoni, a leading specialist in the sector globally.

REDUCE YOUR COMPANY'S FOOTPRINT

By ensuring industrial tyres a longer lifespan and decreasing the energy consumption of vehicles, which in turn reduces polluting emissions and thus the overall ecological impact is significantly reduced.

CUT OPERATING COSTS

Reducing rolling resistance means reducing heat and thus energy consumption.

The benefits are a greater yield per battery charge for electric forklifts and fewer refuelling stops for those based on internal combustion engines.

ACHIEVE HIGH STANDARDS OF QUALITY AND RELIABILITY

The management of the entire production process makes Marangoni one of the few companies able to choose compounds, technologies, machinery and moulds, while at the same time implementing unparalleled know-how.

This results in highly proven and cutting edge products that always offer the performance you need.



SPECIALIST STRENGTH

The quality of the compounds used is essential in the solid industrial tyre sector.

TREAD COMPOUND
Resistant to wear and tear, guarantees excellent grip on wet or slippery surfaces (e.g. oil stains).

CUSHION COMPOUND
Central compound, lowers operating temperature and ensures low rolling resistance.

+LIFE

+COMFORT

+SAVING

+STABILITY

BASE 2
Extremely hard material that reduces deformation and supports the load while preserving bead stiffness and preventing the tyre from coming off the rim.

BASE 1
Ensures the tyre remains attached to the rim over time: the metal rings inside the tyre adhere perfectly to the metal. Perfect coupling to the rim: easy to fit and remove.



SPECIAL-S

This version was designed and developed especially for loaders and produced in the 20 and 24 inch sizes. It is constructed using compounds which are particularly resistant to tearing. The tyre stands out for its resistance to wear and tear, jolts, cuts and abrasions, as well as for its high rigidity that provides stability to the vehicle and, therefore, to the load. Used for vehicles which carry loads, usually in environments with extreme conditions, such as scrap yards and dumps.



NO MARKING-NM

This is a yellow coloured tyre, designed not to leave dark marks on the ground surface. It is constructed with a yellow mixture, containing no dark substances. It's use is recommended in environments where cleanliness is of great importance, for example in the pharmaceutical, food and beverage, and electronic industries, or anywhere light coloured floors must stay clean.



HIGH CAPACITY-HL

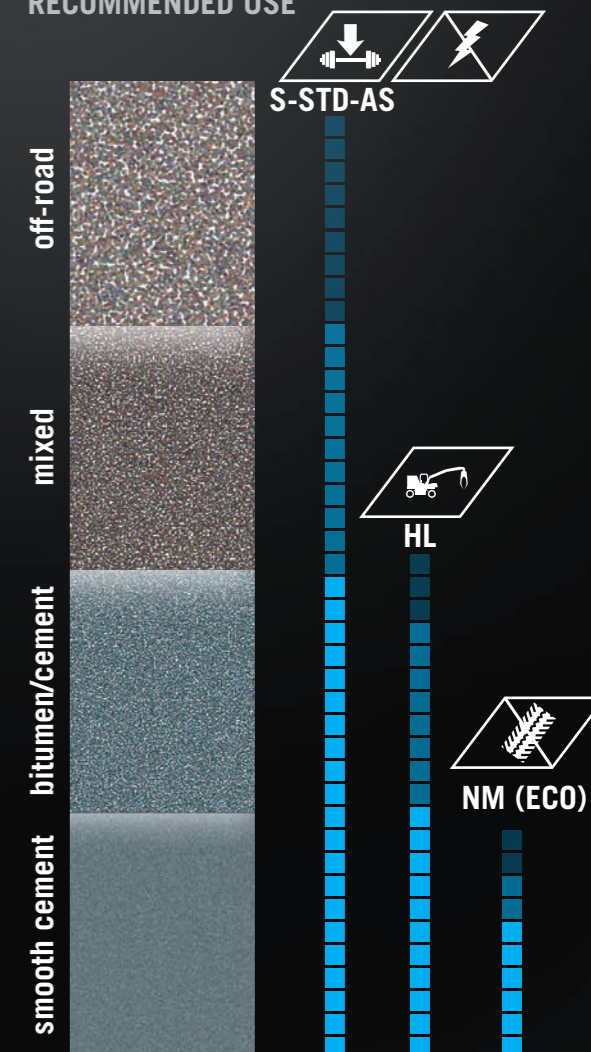
This is a tyre designed with a highly rigid structure in comparison to standard tyres. It is constructed with extremely hard compounds that are able to maintain all the other physical and mechanical characteristics to excellent levels. The distinguishing feature of Super-elastic and Cushion tyres is their ability to sustain high loads with minimal deformation. It is widely used in situations where it is of paramount importance to maintain the stability of the vehicle and, therefore, of the load. It is also utilised in other specific cases. Contact a Marangoni technician for advice before choosing this version.



ANTISTATIC-AS

This tyre was designed to release the static electricity accumulated by the vehicle onto the ground. It is constructed with special additives which perform this action while maintaining all the other physical and mechanical characteristics to excellent levels. It is typically used in paint and solvent factories, in gas tank deposits, in environments with easily flammable fine dust particles or in environments where the accumulation of static electricity can cause explosions. In all of these cases, the use of this tyre increases safety levels. The AS Super-elastic and Cushion tyres are in compliance with the ISO/DIS 2883 standards. A certificate of conformity shall be provided upon customers' request.

SURFACE: RECOMMENDED USE



INNOVATIVE SOLUTIONS

SUPER-ELASTIC ELTOR® 3 INTEGRATED LOADER SYSTEM

The Marangoni integrated loader system is ideal for all stressful situations in which the machines have to work in a stationary position, travelling just short distances and carrying particularly heavy loads (scrap yards, landfills, timber yards, etc.).

TYRE

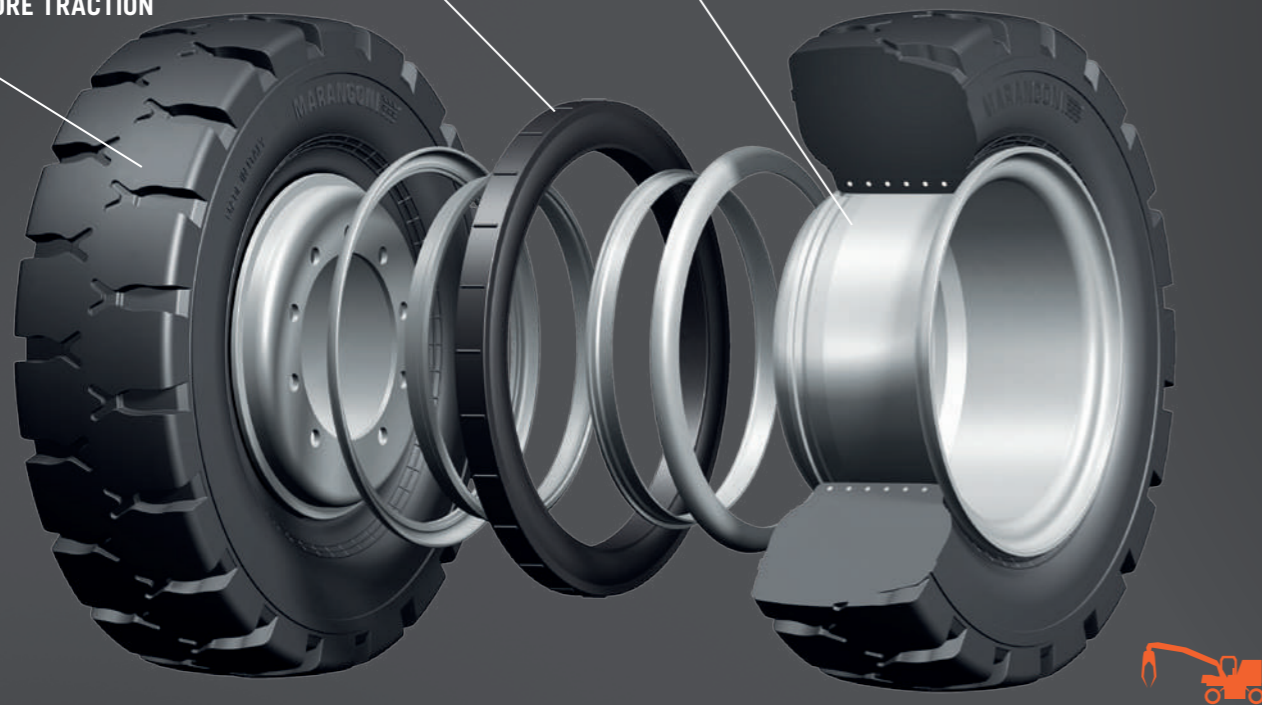
square and compact pattern
less vertical deformation
MORE STABILITY
COMPOUND
resistant to cuts and tears
+ LIFE
TREAD
designed to transmit
MORE TRACTION

SPACER

prevents infiltration
of debris and the like

REINFORCED RIM WITH FLAT BOTTOM CHANNEL

increased thickness
no aeration or inflation valve holes
STURDIER
perfect coupling to the tyres
MORE SOLIDITY



ELTOR® 3 TYRE

High stability tyre designed to withstand very high loads. The reinforced sidewall limits vertical deformation and protects against accidental impact. The compounds used guarantee maximum resistance to cuts and tears and consequently longer life. The tread is designed to improve traction in all working conditions.

RING PROTECTOR

The spacer perfectly traces the profile of the Marangoni Eltor® 3 tyre sidewall, thus preventing infiltration of debris and the like.

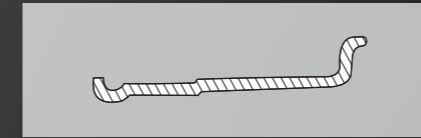
RIM

The reinforced rim with flat bottom channel, designed especially to mount Marangoni solid tyres, solves all skidding problems. Especially robust due to increased thickness and elimination of the aeration holes and the hole for the inflation valve.

SUPER-ELASTIC ELTOR FIX®

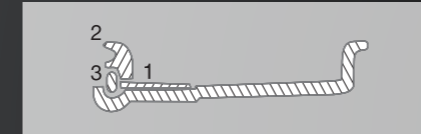
FIX - Bead structure consist of a special border made of highly resistant rubber; guarantees a perfect fit on the rim with no need for fastening rings.

FOR BEAD FIX VERSION

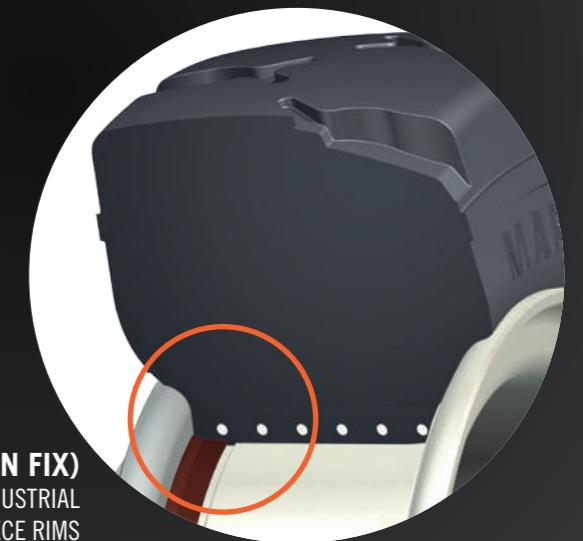


FOR BEAD NON-FIX VERSION

Movable rimparts 1, 2 and 3.



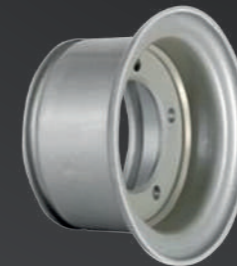
ELTOR FIX®
FOR QUICK AND EASY
INSTALLATION



ELTOR® STANDARD (NON FIX)
FOR FITTING ON INDUSTRIAL
MULTIPIECE RIMS

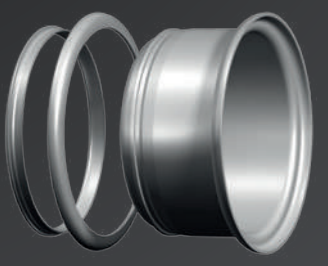
RIMS FOR FIX SOLID TYRES

- Fit all sizes of FIX Solid Tyres from 8" to 20".
- Available for all standard application.
- Adaptable to most custom application.



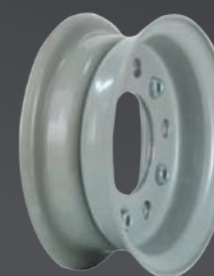
INDUSTRIAL MULTIPIECE RIMS

- Fit all sizes of Industrial Tyres from 8" to 24".
- Available for all standard and heavy duty (20 and 24") application.
- Multipiece design includes 2 or 3 piece components or base wheel for the FIX type application.
- Fit tube type tyres as well as NON FIX solid tyres.
- Designed for easy tyre installation and precise fitment.



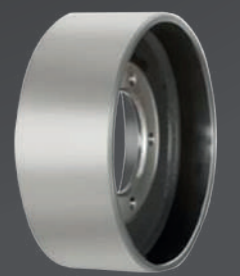
SPLIT RIMS (DEVIDED TYPE)

- Designed for easy tyre installation and precise fitment without press.



WHEELS FOR POB CUSHION TYRES

- Fit all sizes of press on band cushion from 6,5" to 22".
- Available for all standard application.
- Adaptable to most custom application.





SPECIALISED RANGE

SUPER-ELASTIC



ELTOR® EVO no marking

PAGE 14



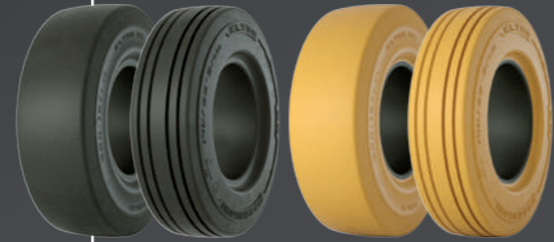
ELTOR® 3 no marking

PAGE 16



ELTOR® ES no marking

PAGE 19



ELTOR® EL-ER no marking

PAGE 20-21



FORZA no marking

PAGE 22



JUMBO no marking

PAGE 24

PRESS ON BAND CUSHION



BSC BL BS no marking

PAGE 26

CONVENTIONAL INDUSTRIAL TYRES



SW LT

PAGE 30

CONVENTIONAL SKID STEER TYRES FOR SMALL-SIZED MACHINES



SS SD SKZ+ HA SKZ

PAGE 32

CONVENTIONAL TYRES FOR INDUSTRIAL TRACTORS FOR CONSTRUCTION AND ROAD WORKS



IM54 TI09

PAGE 33

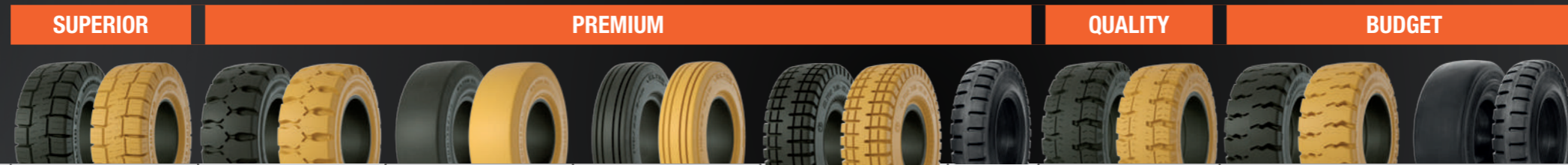
MULTI-PURPOSE CONVENTIONAL TYRES FOR MANUFACTURING MACHINES



MT63 MT45 MT54 MT72 MT90 MT50

PAGE 34-36

SUPER-ELASTIC PATTERN AND SIZES



| | | SUPERIOR | | PREMIUM | | | | | | | | QUALITY | | BUDGET | | | | | | | |
|--------------------|-----------------------|----------|-----|---------|-----|-----|-----|-----|-----|-----|-----|---------|-------|--------|-------|----------|----|----------|-----------|---------------------|----------|
| TYRE SIZE (inches) | RIM SIZE | EVO | | E3 | | EL | | ER | | ES | | E1 | FORZA | | JUMBO | | | | RIM SIZE | TYRE SIZE (inches) | |
| | | STD | FIX | STD | FIX | STD | FIX | STD | FIX | STD | FIX | STD | STD | FIX | J2 | J2 BLOCK | JL | J1 | | | |
| 4" | 3.00-4 | | | | | | | | | | | | | | | | | | 2.10-4 | 3.00-4 | 4" |
| | 12X3,5-8 | | | | | | | | | | | | | | | | | | 3.00D-8 | 12X3,5-8 | |
| | 4.00-4 | | | | | | | | | | | | | | | | | | 2.50C-4 | 4.00-4 | |
| 6" | 3.50/4.00-6 | | | | | | | | | | | | | | | | | | 3.75-6 | 3.50/4.00-6 | 6" |
| | 140/55-6 | | | | | | | | | | | | | | | | | | 4.50-6 | 140/55-6 | |
| 8" | 4.00-8 | | | | | | | | | | | | | | | | | | 3.00D-8 | 4.00-8 | 8" |
| | 15x4½-8 (125/75-8) | | | | | | | | | | | | | | | | | | 2.50D-8 | 15x4½-8 (125/75-8) | |
| | 15x4½-8 (125/75-8) | | | | | | | | | | | | | | | | | | 3.00D-8 | 15x4½-8 (125/75-8) | |
| | 15x4½-8 (125/75-8) | | | | | | | | | | | | | | | | | | 3.25D-8 | 15x4½-8 (125/75-8) | |
| | 5.00-8 | | | | | | | | | | | | | | | | | | 3.00D-8 | 5.00-8 | |
| | 5.00-8 | | | | | | | | | | | | | | | | | | 3.25D-8 | 5.00-8 | |
| | 16x6-8 (150/75-8) | | | | | | | | | | | | | | | | | | 4.33R-8 | 16x6-8 (150/75-8) | |
| | 17x7-8 | | | | | | | | | | | | | | | | | | 4.33R-8 | 17x7-8 | |
| | 18x7-8 (180/70-8) | | | | | | | | | | | | | | | | | | 4.33R-8 | 18x7-8 (180/70-8) | |
| | 18x9-8 | | | | | | | | | | | | | | | | | | 7.00E-8 | 18x9-8 | |
| 9" | 140/55-9 | | | | | | | | | | | | | | | | | | 4.00E-9 | 140/55-9 | 9" |
| | 6.00-9 | | | | | | | | | | | | | | | | | | 4.00E-9 | 6.00-9 | |
| | 21x8-9 (200/75-9) | | | | | | | | | | | | | | | | | | 6.00E-9 | 21x8-9 (200/75-9) | |
| 10" | 6.50-10 | | | | | | | | | | | | | | | | | | 5.00F-10 | 6.50-10 | 10" |
| | 6.50-10 | | | | | | | | | | | | | | | | | | 5.50F-10 | 6.50-10 | |
| | 180/60-10 | | | | | | | | | | | | | | | | | | 5.00F-10 | 180/60-10 | |
| | 7.50-10 | | | | | | | | | | | | | | | | | | 5.50F-10 | 7.50-10 | |
| | 200/50-10 | | | | | | | | | | | | | | | | | | 6.50F-10 | 200/50-10 | |
| | 23x9-10 (225/75-10) | | | | | | | | | | | | | | | | | | 6.50F-10 | 23x9-10 (225/75-10) | |
| 12" | 7.00-12 | | | | | | | | | | | | | | | | | | 5.00S-12 | 7.00-12 | 12" |
| | 23x10-12 (250/60-12) | | | | | | | | | | | | | | | | | | 8.00G-12 | 23x10-12 | |
| | 27x10-12 (250/75-12) | | | | | | | | | | | | | | | | | | 8.00G-12 | 27x10-12 | |
| | 315/45-12 | | | | | | | | | | | | | | | | | | 10.00G-12 | 315/45-12 | |
| 13" | 23x5-13 | | | | | | | | | | | | | | | | | 3.75P-13 | 23x5-13 | 13" | |
| 15" | 7.00-15 | | | | | | | | | | | | | | | | | | 5.5-15 | 7.00-15 | 15" |
| | 7.00-15 | | | | | | | | | | | | | | | | | | 6.0-15 | 7.00-15 | |
| | 7.50-15 | | | | | | | | | | | | | | | | | | 5.50-15 | 7.50-15 | |
| | 7.50-15 | | | | | | | | | | | | | | | | | | 6.0-15 | 7.50-15 | |
| | 7.50-15 | | | | | | | | | | | | | | | | | | 6.5-15 | 7.50-15 | |
| | 200-15 (200/75-15) | | | | | | | | | | | | | | | | | | 6.5-15 | 200-15 (200/75-15) | |
| | 8.25-15 | | | | | | | | | | | | | | | | | | 6.5-15 | 8.25-15 | |
| | 28x9-15 (225/75-15) | | | | | | | | | | | | | | | | | | 7.0-15 | 28x9-15 (8.15-15) | |
| | 250-15 (250/70-15) | | | | | | | | | | | | | | | | | | 7.0-15 | 250-15 (250/70-15) | |
| | 250-15 (250/70-15) | | | | | | | | | | | | | | | | | | 7.5-15 | 250-15 (250/70-15) | |
| | 300-15 (315/70-15) | | | | | | | | | | | | | | | | | | 8.0-15 | 300-15 (315/70-15) | |
| | 28x12½-15 (355/45-15) | | | | | | | | | | | | | | | | | | 9.75-15 | 28x12½-15 | |
| | 355/65-15 (350-15) | | | | | | | | | | | | | | | | | | 9.75-15 | 355/65-15 (350-15) | |
| 400/60-15 | | | | | | | | | | | | | | | | | | 11.0-15 | 400/60-15 | | |
| 20" | 7.50-20 | | | | | | | | | | | | | | | | | | 6.00T-20 | 7.50-20 | 20" |
| | 7.50-20 | | | | | | | | | | | | | | | | | | 7.0-20 | 7.50-20 | |
| | 8.25-20 | | | | | | | | | | | | | | | | | | 6.00T-20 | 8.25-20 | |
| | 8.25-20 | | | | | | | | | | | | | | | | | | 6.50-20 | 8.25-20 | |
| | 8.25-20 | | | | | | | | | | | | | | | | | | 7.0-20 | 8.25-20 | |
| | 355/50-20 | | | | | | | | | | | | | | | | | | 10.0-20 | 355/50-20 | |
| | 9.00-20 | | | | | | | | | | | | | | | | | | 6.5-20 | 9.00-20 | |
| | 9.00-20 | | | | | | | | | | | | | | | | | | 7.0-20 | 9.00-20 | |
| | 10.00-20 | | | | | | | | | | | | | | | | | | 7.0-20 | 10.00-20 | |
| | 10.00-20 | | | | | | | | | | | | | | | | | | 7.5-20 | 10.00-20 | |
| | 10.00-20 | | | | | | | | | | | | | | | | | | 8.0-20 | 10.00-20 | |
| | 11.00-20 | | | | | | | | | | | | | | | | | | 8.0-20 | 11.00-20 | |
| | 12.00-20 | | | | | | | | | | | | | | | | | | 8.0-20 | 12.00-20 | |
| | 12.00-20 | | | | | | | | | | | | | | | | | | 8.5-20 | 12.00-20 | |
| | 12.00-20 | | | | | | | | | | | | | | | | | | 10.0-20 | 12.00-20 | |
| | 24" | 12.00-24 | | | | | | | | | | | | | | | | | | 8.5-24 | 12.00-24 |
| 12.00-24 | | | | | | | | | | | | | | | | | | | 10.0-24 | 12.00-24 | |
| 14.00-24 | | | | | | | | | | | | | | | | | | | 10.0-24 | 14.00-24 | |

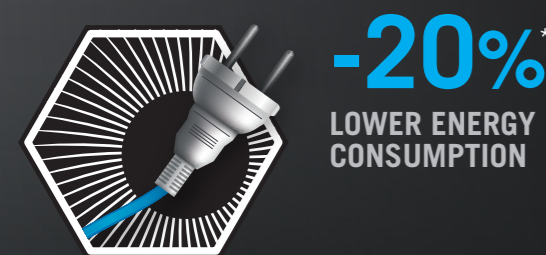
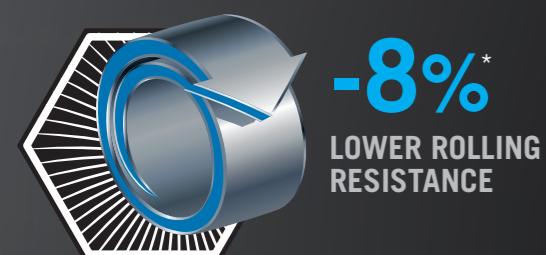
ELTOR EVO

THE TECHNOLOGY THAT ANTICIPATES TOMORROW BY 10%

Our prime objective? To extend tyre life and save our customers time and money, without compromising on performance. Rather, improving performance even more compared to similar competing products.

Marangoni's response has a name: **Eltor EVO**. This new range can withstand a high number of working hours (10% more compared to other premium products) by generating less heat, the result of a new structure and optimised characteristics of the compounds. The results achieved today with **Eltor EVO** in terms of reliability, performance and safety were unconceivable just a few years ago.

Longer continuous service without stopping for maintenance means savings in terms of time and costs, as well as reducing environmental impact. Less replacements mean less CO₂ emissions, beneficial for the environment.



* Tests conducted in the laboratory with other premium products.

MORE TIME, MORE EVOLUTION

NEW TREAD STRUCTURE, WITH THE 60J POSITIONED ON A SMALLER DIAMETER = longer life compared to other premium products

THICKER TREAD

EVOLVED AND UPGRADED COMPOUNDS

Eltor EVO is the super-elastic superior tyre by Marangoni offering the best performance in terms of durability, reliability and energy consumption.

The Marangoni R&D Division, after hundreds of hours spent on testing, has achieved the goal to optimize structures and compounds so as to obtain the best product in the market.

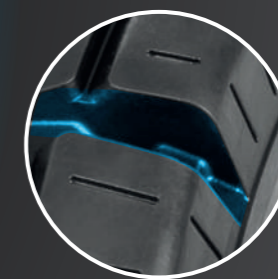
Low rolling resistance together with reduced heat generation allow **Eltor EVO** to be used even in extreme operating conditions, guaranteeing long product life.

COMPOUNDS DESIGNED FOR BETTER ROLLING RESISTANCE AND LESS FRICTION BETWEEN THE TREAD AND THE GROUND = lower energy consumption and maximum battery efficiency

GOOD DIRECTIONALITY

BETTER TRACTION

GREATER STABILITY SMOOTH RUNNING



SUPERIOR

SUPER-ELASTIC

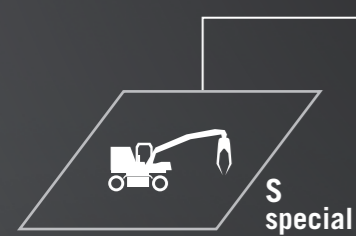
ELTOR EVO

ELTOR EVO NO MARKING



SUPER-ELASTIC ELTOR EVO

SUPERIOR



- Higher mileage.
- High reliability on all forklift trucks, even for heavy duty applications.
- Optimum comfort level.
- Maximum traction.



| Ø | TYRE SIZE (inches) | PROFILE | RIM SIZE | TYRE DIMENSIONS (1) | | WEIGHT (kg) ± 2% | LOAD CAPACITY (KG) AT MAX SPEED (KM/H) (2) | | | | | |
|----------------------|--------------------------|---------|-----------|---------------------|-------------|------------------|--|------------------------|--------------|---------|--------|-------|
| | | | | W (mm) ± 2% | D (mm) ± 2% | | CARRYING WHEEL 25 km/h | STEERING WHEEL 25 km/h | TRAILERS (3) | | | |
| | | | | | | | 25 km/h | 25 km/h | 25 km/h | 10 km/h | 6 km/h | |
| 8" | 4.00-8 | EVO | 3.00D-8 | 105,9 | 403,5 | 10,7 | 950 | 730 | 730 | 860 | 950 | |
| | 4.00-8 | EVO FIX | 3.00D-8 | 105,9 | 403,5 | 11 | 950 | 730 | 730 | 860 | 950 | |
| | 15x4 1/2-8 (125/75-8) | EVO | 3.00D-8 | 109 | 377 | 9,4 | 1.040 | 800 | 800 | 945 | 1.040 | |
| | 15x4 1/2-8 (125/75-8) | EVO FIX | 3.00D-8 | 109 | 377 | 9,7 | 1.040 | 800 | 800 | 945 | 1.040 | |
| | 5.00-8 | EVO | 3.00D-8 | 120 | 458 | 17,1 | 1.415 | 1.090 | 1.090 | 1.285 | 1.415 | |
| | 5.00-8 | EVO FIX | 3.00D-8 | 120 | 458 | 17,2 | 1.415 | 1.090 | 1.090 | 1.285 | 1.415 | |
| | 16x6-8 (150/75-8) | EVO | 4.33R-8 | 151 | 421 | 17,1 | 1.495 | 1.150 | 1.150 | 1.360 | 1.495 | |
| | 16x6-8 (150/75-8) | EVO FIX | 4.33R-8 | 151 | 421 | 17,4 | 1.495 | 1.150 | 1.150 | 1.360 | 1.495 | |
| 9" | 18x7-8 (180/70-8) | EVO | 4.33R-8 | 152 | 453 | 20,2 | 2.145 | 1.650 | 1.650 | 1.945 | 2.145 | |
| | 18x7-8 (180/70-8) | EVO FIX | 4.33R-8 | 152 | 453 | 20,5 | 2.145 | 1.650 | 1.650 | 1.945 | 2.145 | |
| | 140/55-9 | EVO | 4.00E-9 | 130 | 380 | 11,5 | 1.170 | 900 | 900 | 1.060 | 1.170 | |
| | 140/55-9 | EVO FIX | 4.00E-9 | 130 | 380 | 11,8 | 1.170 | 900 | 900 | 1.060 | 1.170 | |
| | 6.00-9 | EVO | 4.00E-9 | 139 | 525 | 26,1 | 1.885 | 1.450 | 1.450 | 1.710 | 1.885 | |
| | 6.00-9 | EVO FIX | 4.00E-9 | 139 | 525 | 26,4 | 1.885 | 1.450 | 1.450 | 1.710 | 1.885 | |
| | 21x8-9 (200/75-9) | EVO | 6.00E-9 | 183 | 522 | 34,2 | 2.755 | 2.120 | 2.120 | 2.500 | 2.755 | |
| | 21x8-9 (200/75-9) | EVO FIX | 6.00E-9 | 183 | 522 | 34,6 | 2.755 | 2.120 | 2.120 | 2.500 | 2.755 | |
| 10" | 6.50-10 | EVO | 5.00F-10 | 160 | 575 | 36,6 | 2.340 | 1.800 | 1.800 | 2.125 | 2.340 | |
| | 6.50-10 | EVO FIX | 5.00F-10 | 160 | 575 | 36,8 | 2.340 | 1.800 | 1.800 | 2.125 | 2.340 | |
| | 180/60-10 | EVO | 5.00F-10 | 152 | 454 | 18,5 | 2.410 | 1.850 | 1.850 | 2.180 | 2.410 | |
| | 180/60-10 | EVO FIX | 5.00F-10 | 152 | 454 | 19 | 2.410 | 1.850 | 1.850 | 2.180 | 2.410 | |
| | 7.50-10 | EVO | 5.50F-10 | 176 | 636 | 52,3 | 3.070 | 2.360 | 2.360 | 2.785 | 3.070 | |
| | 7.50-10 | EVO FIX | 5.50F-10 | 176 | 636 | 52,3 | 3.070 | 2.360 | 2.360 | 2.785 | 3.070 | |
| | 200/50-10 | EVO | 6.50F-10 | 189 | 464 | 25,6 | 2.470 | 1.900 | 1.900 | 2.240 | 2.470 | |
| | 200/50-10 | EVO FIX | 6.50F-10 | 189 | 464 | 26,1 | 2.470 | 1.900 | 1.900 | 2.240 | 2.470 | |
| | 23x9-10 (225/75-10) | EVO | 6.50F-10 | 195 | 581 | 46 | 3.445 | 2.650 | 2.650 | 3.125 | 3.445 | |
| | 23x9-10 (225/75-10) | EVO FIX | 6.50F-10 | 195 | 581 | 46,3 | 3.445 | 2.650 | 2.650 | 3.125 | 3.445 | |
| | 12" | 7.00-12 | EVO | 5.00S-12 | 169 | 658 | 47,6 | 2.920 | 2.240 | 2.240 | 2.645 | 2.920 |
| | | 7.00-12 | EVO FIX | 5.00S-12 | 169 | 658 | 48,3 | 2.920 | 2.240 | 2.240 | 2.645 | 2.920 |
| 23x10-12 (250/60-12) | | EVO | 8.00G-12 | 227 | 586 | 49,9 | 3.770 | 2.900 | 2.900 | 3.420 | 3.770 | |
| 23x10-12 (250/60-12) | | EVO FIX | 8.00G-12 | 227 | 586 | 50,6 | 3.770 | 2.900 | 2.900 | 3.420 | 3.770 | |
| 27x10-12 (250/75-12) | | EVO | 8.00G-12 | 235 | 672 | 73,5 | 3.900 | 3.000 | 3.000 | 3.540 | 3.900 | |
| 27x10-12 (250/75-12) | | EVO FIX | 8.00G-12 | 235 | 672 | 74,3 | 3.900 | 3.000 | 3.000 | 3.540 | 3.900 | |
| 315/45-12 | | EVO | 10.00G-12 | 275 | 588 | 61 | 4.485 | 3.450 | 3.450 | 4.070 | 4.485 | |
| 315/45-12 | | EVO FIX | 10.00G-12 | 285 | 574 | 61,4 | 4.485 | 3.450 | 3.450 | 4.070 | 4.485 | |
| 15" | | 7.00-15 | EVO | 5.5-15 | 180 | 728 | 59 | 3.545 | 2.725 | 2.725 | 3.215 | 3.545 |
| | 7.00-15 | EVO FIX | 5.5-15 | 180 | 728 | 59,5 | 3.545 | 2.725 | 2.725 | 3.215 | 3.545 | |
| | 7.50-15 | EVO | 5.5-15 | 205 | 758 | 72,2 | 3.900 | 3.000 | 3.000 | 3.540 | 3.900 | |
| | 7.50-15 | EVO FIX | 5.5-15 | 205 | 758 | 72,7 | 3.900 | 3.000 | 3.000 | 3.540 | 3.900 | |
| | 7.50-15 | EVO | 6.5-15 | 205 | 758 | 72,9 | 3.900 | 3.000 | 3.000 | 3.540 | 3.900 | |
| | 7.50-15 | EVO FIX | 6.5-15 | 205 | 758 | 74,2 | 3.900 | 3.000 | 3.000 | 3.540 | 3.900 | |
| | 8.25-15 | EVO | 6.5-15 | 203 | 822 | 90,9 | 4.750 | 3.650 | 3.650 | 4.300 | 4.750 | |
| | 8.25-15 | EVO FIX | 6.5-15 | 203 | 822 | 92,4 | 4.750 | 3.650 | 3.650 | 4.300 | 4.750 | |
| | 28x9-15 (225/75-15) | EVO | 7.0-15 | 214 | 699 | 61,8 | 3.445 | 2.650 | 2.650 | 3.125 | 3.445 | |
| | 28x9-15 (225/75-15) | EVO FIX | 7.0-15 | 214 | 699 | 62,2 | 3.445 | 2.650 | 2.650 | 3.125 | 3.445 | |
| | 250-15 (250/70-15) | EVO | 7.0-15 | 214 | 721 | 66,5 | 4.745 | 3.650 | 3.650 | 4.310 | 4.745 | |
| | 250-15 (250/70-15) | EVO FIX | 7.0-15 | 214 | 721 | 67 | 4.745 | 3.650 | 3.650 | 4.310 | 4.745 | |
| | 250-15 (250/70-15) | EVO | 7.5-15 | 214 | 721 | 67,5 | 4.745 | 3.650 | 3.650 | 4.310 | 4.745 | |
| | 250-15 (250/70-15) | EVO FIX | 7.5-15 | 214 | 721 | 68,5 | 4.745 | 3.650 | 3.650 | 4.310 | 4.745 | |
| | 300-15 (315/70-15) | EVO | 8.0-15 | 256 | 821 | 114 | 5.850 | 4.500 | 4.500 | 5.310 | 5.850 | |
| | 300-15 (315/70-15) | EVO FIX | 8.0-15 | 256 | 821 | 114,9 | 5.850 | 4.500 | 4.500 | 5.310 | 5.850 | |
| | 28x12 1/2-15 (355/45-15) | EVO | 9.75-15 | 285 | 716 | 91 | 5.690 | 4.375 | 4.375 | 5.165 | 5.690 | |
| | 28x12 1/2-15 (355/45-15) | EVO FIX | 9.75-15 | 285 | 716 | 92 | 5.690 | 4.375 | 4.375 | 5.165 | 5.690 | |
| 20" | 355/65-15 (350-15) | EVO | 9.75-15 | 300 | 821 | 135,2 | 7.800 | 6.000 | 5.450 | 6.430 | 7.085 | |
| | 355/65-15 (350-15) | EVO FIX | 9.75-15 | 300 | 821 | 136,1 | 7.800 | 6.000 | 5.450 | 6.430 | 7.085 | |
| 20" | 355/50-20 | EVO | 10.0-20 | 309 | 832 | 119 | 8.970 | 6.900 | 6.900 | 8.140 | 8.970 | |
| | 355/50-20 | EVO FIX | 10.0-20 | 309 | 832 | 119,8 | 8.970 | 6.900 | 6.900 | 8.140 | 8.970 | |

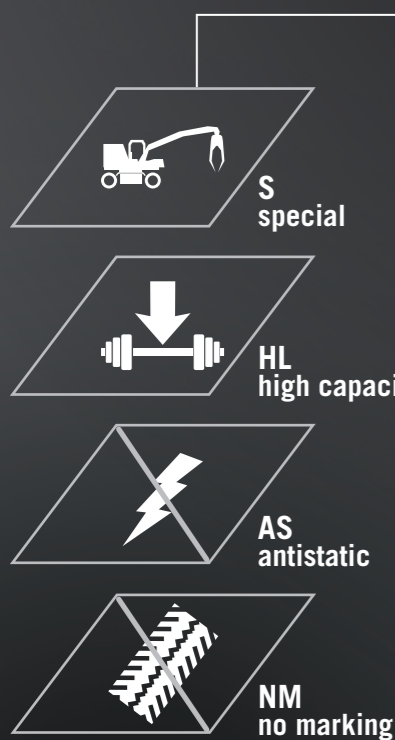
(1) Sizes are intended for tyres not fitted on rims;
(2) Capacity values indicated are in reference to ELTOR tyres mounted on vehicles whose speed with no cargo is less than 25 km/h (according to E.T.R.T.O. standards);
(3) Only for interior courses inferior to 2.000 metres; if otherwise, contact dealer (according to E.T.R.T.O. standards).

PREMIUM

SUPER-ELASTIC

ELTOR® 3

ELTOR® 3 NO MARKING



- Tested structure that always offers good mileage.
- High stability, suitable for large forklift trucks and loaders.
- Excellent comfort in every situation.

SUPER-ELASTIC ELTOR® 3

PREMIUM

| Ø | TYRE SIZE (inches) | PROFILE | RIM SIZE | TYRE DIMENSIONS (1) | | WEIGHT (kg) ± 2% | LOAD CAPACITY (KG) AT MAX SPEED (KM/H) (2) | | | | | |
|-------------------|----------------------|-------------------|-----------|---------------------|-------------|------------------|--|------------------------|--------------|-------|-------|-------|
| | | | | W (mm) ± 2% | D (mm) ± 2% | | CARRYING WHEEL 25 km/h | STEERING WHEEL 25 km/h | TRAILERS (3) | | | |
| | | | | | | | 25 km/h | 10 km/h | 6 km/h | | | |
| 4" | 3.00-4 | E1 | 2.10-4 | 76 | 250 | 3,5 | 260 | 195 | 195 | 235 | 260 | |
| | 4.00-4 | E3 | 2.50C-4 | 101 | 303 | 6,6 | 535 | 412 | 412 | 485 | 535 | |
| 6" | 3.50/4.00-6 | E3 | 3.75-6 | 112 | 311 | 7 | 410 | 315 | 315 | 370 | 410 | |
| | 140/55-6 | E3 | 4.50-6 | 131 | 311 | 8,3 | 1.070 | 825 | 825 | 970 | 1.070 | |
| 8" | 4.00-8 | E3 | 3.00D-8 | 100 | 403 | 10,3 | 950 | 730 | 730 | 860 | 950 | |
| | 4.00-8 | E3 FIX | 3.00D-8 | 100 | 403 | 10,6 | 950 | 730 | 730 | 860 | 950 | |
| | 15x4½-8 (125/75-8) | E3 | 3.00D-8 | 109 | 375 | 9,3 | 1.040 | 800 | 800 | 945 | 1.040 | |
| | 15x4½-8 (125/75-8) | E3 FIX | 3.00D-8 | 109 | 375 | 9,5 | 1.040 | 800 | 800 | 945 | 1.040 | |
| | 15x4½-8 (125/75-8) | E3 | 3.25D-8 | 107 | 377 | 9,2 | 1.040 | 800 | 800 | 945 | 1.040 | |
| | 5.00-8 | E3 | 3.00D-8 | 123 | 455 | 16,6 | 1.415 | 1.090 | 1.090 | 1.285 | 1.415 | |
| | 5.00-8 | E3 FIX | 3.00D-8 | 123 | 455 | 16,9 | 1.415 | 1.090 | 1.090 | 1.285 | 1.415 | |
| | 5.00-8 | E3 | 3.25D-8 | 123 | 455 | 16,3 | 1.415 | 1.090 | 1.090 | 1.285 | 1.415 | |
| | 16x6-8 (150/75-8) | E3 | 4.33R-8 | 150 | 418 | 16,5 | 1.495 | 1.150 | 1.150 | 1.360 | 1.495 | |
| | 16x6-8 (150/75-8) | E3 FIX | 4.33R-8 | 150 | 418 | 16,8 | 1.495 | 1.150 | 1.150 | 1.360 | 1.495 | |
| 8" | 18x7-8 (180/70-8) | E3 | 4.33R-8 | 148 | 448 | 19,8 | 2.145 | 1.650 | 1.650 | 1.945 | 2.145 | |
| | 18x7-8 (180/70-8) | E3 FIX | 4.33R-8 | 148 | 448 | 20 | 2.145 | 1.650 | 1.650 | 1.945 | 2.145 | |
| | 18x9-8 | E3 | 7.00E-8 | 214 | 454 | 29,5 | 2.300 | 1.900 | 1.900 | 2.090 | 2.300 | |
| | 9" | 140/55-9 | E3 | 4.00E-9 | 130 | 380 | 10 | 1.170 | 900 | 900 | 1.060 | 1.170 |
| | | 140/55-9 | E3 FIX | 4.00E-9 | 130 | 380 | 10,3 | 1.170 | 900 | 900 | 1.060 | 1.170 |
| | 9" | 6.00-9 | E3 | 4.00E-9 | 139 | 522 | 25,3 | 1.885 | 1.450 | 1.450 | 1.710 | 1.885 |
| | | 6.00-9 | E3 FIX | 4.00E-9 | 139 | 522 | 25,6 | 1.885 | 1.450 | 1.450 | 1.710 | 1.885 |
| | | 21x8-9 (200/75-9) | E3 | 6.00E-9 | 182 | 520 | 33,2 | 2.755 | 2.120 | 2.120 | 2.500 | 2.755 |
| 21x8-9 (200/75-9) | | E3 FIX | 6.00E-9 | 182 | 520 | 33,6 | 2.755 | 2.120 | 2.120 | 2.500 | 2.755 | |
| 10" | | 6.50-10 | E3 | 5.00F-10 | 163 | 570 | 35,5 | 2.340 | 1.800 | 1.800 | 2.125 | 2.340 |
| | | 6.50-10 | E3 FIX | 5.00F-10 | 163 | 570 | 35,7 | 2.340 | 1.800 | 1.800 | 2.125 | 2.340 |
| | 6.50-10 | E3 | 5.50F-10 | 163 | 570 | 35 | 2.570 | 1.975 | 1.975 | 2.335 | 2.570 | |
| | 7.50-10 | E3 | 5.50F-10 | 176 | 636 | 49,8 | 3.070 | 2.360 | 2.360 | 2.785 | 3.070 | |
| | 200/50-10 | E3 | 6.50F-10 | 193 | 457 | 24 | 2.470 | 1.900 | 1.900 | 2.240 | 2.470 | |
| | 200/50-10 | E3 FIX | 6.50F-10 | 193 | 457 | 24,8 | 2.470 | 1.900 | 1.900 | 2.240 | 2.470 | |
| | 23x9-10 (225/75-10) | E3 | 6.50F-10 | 194 | 578 | 44,1 | 3.445 | 2.650 | 2.650 | 3.125 | 3.445 | |
| | 23x9-10 (225/75-10) | E3 FIX | 6.50F-10 | 194 | 578 | 44,5 | 3.445 | 2.650 | 2.650 | 3.125 | 3.445 | |
| 12" | 7.00-12 | E3 | 5.00S-12 | 168 | 649 | 45,9 | 2.920 | 2.240 | 2.240 | 2.645 | 2.920 | |
| | 7.00-12 | E3 FIX | 5.00S-12 | 168 | 649 | 46,6 | 2.920 | 2.240 | 2.240 | 2.645 | 2.920 | |
| | 23x10-12 (250/60-12) | E3 | 8.00G-12 | 227 | 580 | 47,4 | 3.770 | 2.900 | 2.900 | 3.420 | 3.770 | |
| | 23x10-12 (250/60-12) | E3 FIX | 8.00G-12 | 227 | 580 | 47,8 | 3.770 | 2.900 | 2.900 | 3.420 | 3.770 | |
| | 27x10-12 (250/75-12) | E3 | 8.00G-12 | 237 | 669 | 69,6 | 3.900 | 3.000 | 3.000 | 3.540 | 3.900 | |
| | 27x10-12 (250/75-12) | E3 FIX | 8.00G-12 | 237 | 669 | 70,4 | 3.900 | 3.000 | 3.000 | 3.540 | 3.900 | |
| | 315/45-12 | E3 | 10.00G-12 | 285 | 574 | 55,9 | 4.485 | 3.450 | 3.450 | 4.070 | 4.485 | |
| | 315/45-12 | E3 FIX | 10.00G-12 | 285 | 574 | 56,7 | 4.485 | 3.450 | 3.450 | 4.070 | 4.485 | |
| 13" | 23x5 | E3 | 3.75P-13 | 138 | 612 | 32 | 1.495 | 1.150 | 1.150 | 1.360 | 1.495 | |
| | 23x5 | E3 FIX | 3.75P-13 | 138 | 612 | 32,8 | 1.495 | 1.150 | 1.150 | 1.360 | 1.495 | |

(1) Sizes are intended for tyres not fitted on rims;
 (2) Capacity values indicated are in reference to ELTOR tyres mounted on vehicles whose speed with no cargo is less than 25 km/h (according to E.T.R.T.O. standards);
 (3) Only for interior courses inferior to 2.000 metres; if otherwise, contact dealer (according to E.T.R.T.O. standards).



SUPER-ELASTIC ELTOR® 3

PREMIUM

| Ø | TYRE SIZE (inches) | PROFILE | RIM SIZE | TYRE DIMENSIONS (1) | | WEIGHT (kg) ± 2% | LOAD CAPACITY (KG) AT MAX SPEED (KM/H) (2) | | | | | |
|-----------------------|---------------------|----------|----------|---------------------|-------------|------------------|--|------------------------|--------------|---------|--------|--------|
| | | | | W (mm) ± 2% | D (mm) ± 2% | | CARRYING WHEEL 25 km/h | STEERING WHEEL 25 km/h | TRAILERS (3) | | | |
| | | | | | | | 25 km/h | 25 km/h | 25 km/h | 10 km/h | 6 km/h | |
| 15" | 7.00-15 | E3 | 5.5-15 | 178 | 723 | 55,7 | 3.545 | 2.725 | 2.725 | 3.215 | 3.545 | |
| | 7.00-15 | E3 FIX | 5.5-15 | 178 | 723 | 56,2 | 3.545 | 2.725 | 2.725 | 3.215 | 3.545 | |
| | 7.00-15 | E3 | 6.0-15 | 178 | 723 | 57 | 3.545 | 2.725 | 2.725 | 3.215 | 3.545 | |
| | 7.50-15 | E3 | 5.50-15 | 205 | 750 | 67,4 | 3.900 | 3.000 | 3.000 | 3.540 | 3.900 | |
| | 7.50-15 | E3 FIX | 5.50-15 | 205 | 750 | 68,5 | 3.900 | 3.000 | 3.000 | 3.540 | 3.900 | |
| | 7.50-15 | E3 | 6.0-15 | 205 | 750 | 69,6 | 3.900 | 3.000 | 3.000 | 3.540 | 3.900 | |
| | 7.50-15 | E3 FIX | 6.0-15 | 205 | 750 | 70 | 3.900 | 3.000 | 3.000 | 3.540 | 3.900 | |
| | 7.50-15 | E3 | 6.5-15 | 205 | 750 | 70,2 | 3.900 | 3.000 | 3.000 | 3.540 | 3.900 | |
| | 7.50-15 | E3 FIX | 6.5-15 | 205 | 750 | 71,7 | 3.900 | 3.000 | 3.000 | 3.540 | 3.900 | |
| | 200-15 | E3 | 6.5-15 | 204 | 710 | 60 | 3.160 | 2.430 | 2.430 | 2.865 | 3.160 | |
| | 200-15 | E3 FIX | 6.5-15 | 204 | 710 | 60,5 | 3.160 | 2.430 | 2.430 | 2.865 | 3.160 | |
| | 8.25-15 | E3 | 6.5-15 | 209 | 812 | 87,2 | 4.750 | 3.650 | 3.650 | 4.300 | 4.750 | |
| | 8.25-15 | E3 FIX | 6.5-15 | 209 | 812 | 88,3 | 4.750 | 3.650 | 3.650 | 4.300 | 4.750 | |
| | 28x9-15 (225/75-15) | E3 | 7.0-15 | 217 | 693 | 59,6 | 3.445 | 2.650 | 2.650 | 3.125 | 3.445 | |
| | 28x9-15 (225/75-15) | E3 FIX | 7.0-15 | 217 | 693 | 60,7 | 3.445 | 2.650 | 2.650 | 3.125 | 3.445 | |
| | 250-15 (250/70-15) | E3 | 7.0-15 | 217 | 715 | 66,5 | 4.745 | 3.650 | 3.650 | 4.310 | 4.745 | |
| | 250-15 (250/70-15) | E3 FIX | 7.0-15 | 217 | 715 | 67,3 | 4.745 | 3.650 | 3.650 | 4.310 | 4.745 | |
| | 250-15 (250/70-15) | E3 | 7.5-15 | 217 | 715 | 66,6 | 4.745 | 3.650 | 3.650 | 4.310 | 4.745 | |
| | 250-15 (250/70-15) | E3 FIX | 7.5-15 | 217 | 715 | 67,8 | 4.745 | 3.650 | 3.650 | 4.310 | 4.745 | |
| | 300-15 (315/70-15) | E3 | 8.0-15 | 258 | 816 | 109,2 | 5.850 | 4.500 | 4.500 | 5.310 | 5.850 | |
| 300-15 (315/70-15) | E3 FIX | 8.0-15 | 258 | 816 | 110 | 5.850 | 4.500 | 4.500 | 5.310 | 5.850 | | |
| 28x12½-15 (355/45-15) | E3 | 9.75-15 | 285 | 711 | 88,5 | 5.690 | 4.375 | 4.375 | 5.165 | 5.690 | | |
| 28x12½-15 (355/45-15) | E3 FIX | 9.75-15 | 285 | 711 | 89,6 | 5.690 | 4.375 | 4.375 | 5.165 | 5.690 | | |
| 355/65-15 (350-15) | E3 | 9.75-15 | 300 | 816 | 130,3 | 7.800 | 6.000 | 5.450 | 6.430 | 7.085 | | |
| 355/65-15 (350-15) | E3 FIX | 9.75-15 | 300 | 816 | 131,7 | 7.800 | 6.000 | 5.450 | 6.430 | 7.085 | | |
| 400/60-15 | E3 | 11.0-15 | 332 | 817 | 145,6 | 8.970 | 6.900 | 6.900 | 8.140 | 8.970 | | |
| 400/60-15 | E3 FIX | 11.0-15 | 332 | 817 | 147 | 8.970 | 6.900 | 6.900 | 8.140 | 8.970 | | |
| 20" | 7.50-20 | E3 | 6.00T-20 | 211 | 880 | 88,4 | 3.900 | 3.250 | 3.250 | 3.545 | 3.900 | |
| | 7.50-20 | E3 | 7.0-20 | 211 | 880 | 90 | 4.020 | 3.350 | 3.350 | 3.650 | 4.020 | |
| | 8.25-20 | E3 | 6.00T-20 | 206 | 941 | 107,8 | 4.380 | 3.650 | 3.650 | 3.980 | 4.380 | |
| | 8.25-20 | E3 | 6.50-20 | 206 | 941 | 109 | 4.380 | 3.650 | 3.650 | 3.980 | 4.380 | |
| | 8.25-20 | E3 | 7.0-20 | 206 | 941 | 110 | 4.380 | 3.650 | 3.650 | 3.980 | 4.380 | |
| | 9.00-20 | E3 | 6.5-20 | 241 | 989 | 143,6 | 5.400 | 4.500 | 4.500 | 4.905 | 5.400 | |
| | 9.00-20 | E3 | 7.0-20 | 241 | 989 | 149,2 | 5.400 | 4.500 | 4.500 | 4.905 | 5.400 | |
| | 10.00-20 | E3 | 7.0-20 | 258 | 1.011 | 163,5 | 6.000 | 5.000 | 5.000 | 5.450 | 6.000 | |
| | 10.00-20 | E3 | 7.5-20 | 258 | 1.011 | 165,6 | 6.000 | 5.000 | 5.000 | 5.450 | 6.000 | |
| | 10.00-20 | E3 | 8.0-20 | 258 | 1.011 | 166,7 | 6.000 | 5.000 | 5.000 | 5.450 | 6.000 | |
| | 11.00-20 | E3 | 8.0-20 | 261 | 1.086 | 200,5 | 6.540 | 5.450 | 5.450 | 5.940 | 6.540 | |
| | 12.00-20 | E3 | 8.0-20 | 267 | 1.099 | 211 | 7.560 | 6.300 | 6.300 | 6.865 | 7.560 | |
| | 12.00-20 | E3 | 8.5-20 | 267 | 1.099 | 218 | 7.560 | 6.300 | 6.300 | 6.865 | 7.560 | |
| | 12.00-20 | E3 | 10.0-20 | 303 | 1.099 | 255 | 7.800 | 6.500 | 6.500 | 7.085 | 7.800 | |
| | 24" | 12.00-24 | E3 | 8.5-24 | 281 | 1.183 | 239 | 8.040 | 6.700 | 6.700 | 7.305 | 8.040 |
| | | 14.00-24 | E3 | 10.0-24 | 353 | 1.300 | 387 | 11.100 | 9.250 | 9.250 | 10.085 | 11.100 |

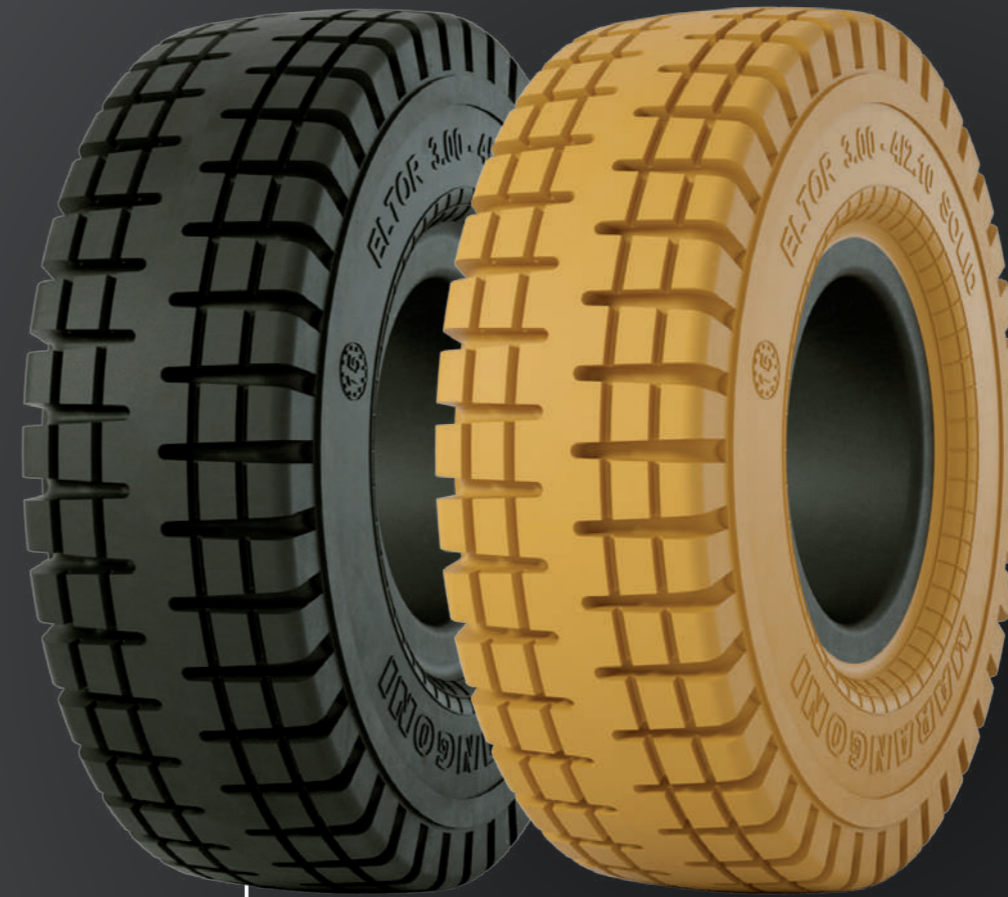
(1) Sizes are intended for tyres not fitted on rims;
 (2) Capacity values indicated are in reference to ELTOR tyres mounted on vehicles whose speed with no cargo is less than 25 km/h (according to E.T.R.T.O. standards);
 (3) Only for interior courses inferior to 2.000 metres; if otherwise, contact dealer (according to E.T.R.T.O. standards).

PREMIUM

SUPER-ELASTIC

ELTOR ES

ELTOR ES NO MARKING



AS
antistatic

NM
no marking

- Grooved tread.
- Created exclusively for size 3.00-4.
- Particularly efficient on wet and damp surfaces thanks to excellent grip and directional hold, even on slippery surfaces such as ceramic tiles wet by liquid detergents.

| Ø | TYRE SIZE (inches) | PROFILE | RIM SIZE | TYRE DIMENSIONS (1) | | WEIGHT (kg) ± 2% | LOAD CAPACITY (KG) AT MAX SPEED (KM/H) (2) | | | | |
|----|--------------------|---------|----------|---------------------|-------------|------------------|--|------------------------|--------------|---------|--------|
| | | | | W (mm) ± 2% | D (mm) ± 2% | | CARRYING WHEEL 25 km/h | STEERING WHEEL 25 km/h | TRAILERS (3) | | |
| | | | | | | | 25 km/h | 25 km/h | 25 km/h | 10 km/h | 6 km/h |
| 4" | 3.00-4 | ES | 2.10-4 | 85 | 248 | 3,6 | 260 | 195 | 195 | 235 | 260 |

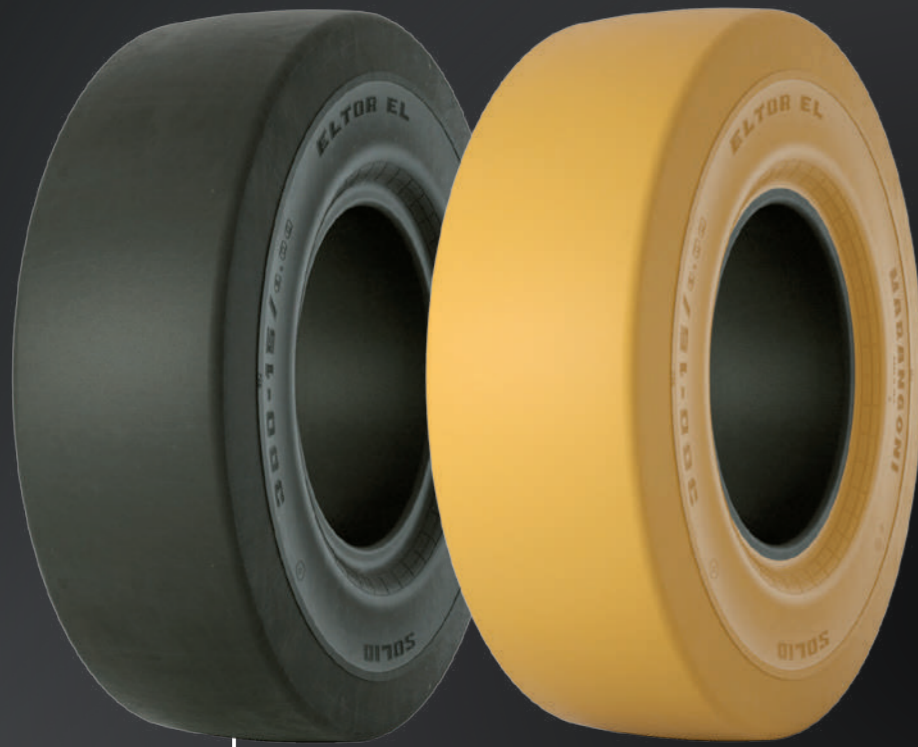
(1) Sizes are intended for tyres not fitted on rims;
 (2) Capacity values indicated are in reference to ELTOR tyres mounted on vehicles whose speed with no cargo is less than 25 km/h (according to E.T.R.T.O. standards);
 (3) Only for interior courses inferior to 2.000 metres; if otherwise, contact dealer (according to E.T.R.T.O. standards).

PREMIUM

SUPER-ELASTIC

ELTOR EL

ELTOR EL NO MARKING



- Smooth tread suitable for dry floors.
- Excellent comfort thanks to low rolling noise.
- Greater protection against damage.

| Ø | TYRE SIZE (inches) | PROFILE | RIM SIZE | TYRE DIMENSIONS (1) | | WEIGHT (kg) ± 2% | LOAD CAPACITY (KG) AT MAX SPEED (KM/H) (2) | | | | |
|----------|---------------------|---------|----------|---------------------|-------------|------------------|--|------------------------|--------------|---------|--------|
| | | | | W (mm) ± 2% | D (mm) ± 2% | | CARRYING WHEEL 25 km/h | STEERING WHEEL 25 km/h | TRAILERS (3) | | |
| | | | | | | | 25 km/h | 25 km/h | 25 km/h | 10 km/h | 6 km/h |
| 8" | 15x4½-8 (125/75-8)* | EL | 3.00D-8 | - | - | - | 1.040 | 800 | 800 | 945 | 1.040 |
| | 15x4½-8 (125/75-8)* | EL FIX | 3.00D-8 | - | - | - | 1.040 | 800 | 800 | 945 | 1.040 |
| | 5.00-8 | EL | 3.00D-8 | 124 | 454 | 15,7 | 1.415 | 1.090 | 1.090 | 1.285 | 1.415 |
| | 17x7-8 | EL | 4.33R-8 | 156 | 430 | 18 | 1.800 | 1.380 | 1.380 | 1.640 | 1.800 |
| 8" | 18x7-8 (180/70-8) | EL | 4.33R-8 | 147 | 448 | 21 | 2.145 | 1.650 | 1.650 | 1.945 | 2.145 |
| | 6.00-9 | EL | 4.00E-9 | 144 | 523 | 26,4 | 1.885 | 1.450 | 1.450 | 1.710 | 1.885 |
| 9" | 6.00-9 | EL FIX | 4.00E-9 | 144 | 523 | 30 | 1.885 | 1.450 | 1.450 | 1.710 | 1.885 |
| | 6.50-10 | EL | 5.00F-10 | 163 | 570 | 36,5 | 2.340 | 1.800 | 1.800 | 2.125 | 2.340 |
| 12" | 7.00-12 | EL | 5.00S-12 | 168 | 649 | 47,3 | 2.920 | 2.240 | 2.240 | 2.645 | 2.920 |
| | 7.00-12 | EL FIX | 5.00S-12 | 168 | 649 | 48,1 | 2.920 | 2.240 | 2.240 | 2.645 | 2.920 |
| 15" | 7.00-15 | EL | 5.5-15 | 178 | 723 | 57,4 | 3.545 | 2.725 | 2.725 | 3.215 | 3.545 |
| | 7.00-15 | EL FIX | 5.5-15 | 178 | 723 | 57,9 | 3.545 | 2.725 | 2.725 | 3.215 | 3.545 |
| | 8.25-15 | EL | 6.5-15 | 208 | 813 | 88,5 | 4.750 | 3.650 | 3.650 | 4.300 | 4.750 |
| | 300-15 (315/70-15) | EL | 8.0-15 | 258 | 816 | 120 | 5.850 | 4.500 | 4.500 | 5.310 | 5.850 |
| 20" | 300-15 (315/70-15) | EL FIX | 8.0-15 | 258 | 816 | 120,9 | 5.850 | 4.500 | 4.500 | 5.310 | 5.850 |
| | 12.00-20 | EL | 8.0-20 | 263 | 1.102 | 215,2 | 7.560 | 6.300 | 6.300 | 6.865 | 7.560 |
| 24" | 12.00-20 | EL | 8.5-20 | 267 | 1.102 | 220 | 7.560 | 6.300 | 6.300 | 6.865 | 7.560 |
| | 12.00-20 | EL | 10.0-20 | 312 | 1.102 | 262 | 7.800 | 6.500 | 6.500 | 7.085 | 7.800 |
| | 355/50-20 | EL | 10.0-20 | 320 | 845 | 122 | 8.970 | 6.900 | 6.900 | 8.140 | 8.970 |
| | 355/50-20 | EL FIX | 10.0-20 | 320 | 845 | 124,5 | 8.970 | 6.900 | 6.900 | 8.140 | 8.970 |
| | 12.00-24 | EL | 8.5-24 | 292 | 1.180 | 256 | 8.040 | 6.700 | 6.700 | 7.305 | 8.040 |
| 12.00-24 | EL | 10.0-24 | 292 | 1.180 | 260,5 | 9.000 | 7.500 | 7.100 | 7.750 | 8.500 | |

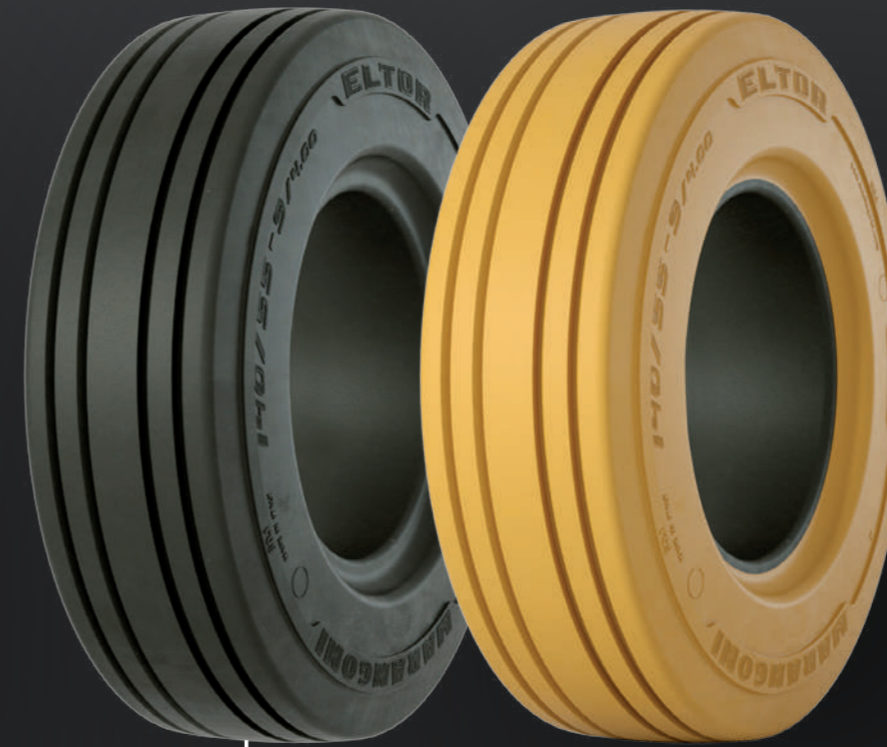
* In preparation

PREMIUM

SUPER-ELASTIC

ELTOR ER

ELTOR ER NO MARKING



- Tread pattern with circumferential ribbing.
- Suitable for small vehicles, both motorised and unpowered.
- Very useful in situations where vibrations need to be avoided and friction minimised.

| Ø | TYRE SIZE (inches) | PROFILE | RIM SIZE | TYRE DIMENSIONS (1) | | WEIGHT (kg) ± 2% | LOAD CAPACITY (KG) AT MAX SPEED (KM/H) (2) | | | | |
|----|--------------------|---------|----------|---------------------|-------------|------------------|--|------------------------|--------------|---------|--------|
| | | | | W (mm) ± 2% | D (mm) ± 2% | | CARRYING WHEEL 25 km/h | STEERING WHEEL 25 km/h | TRAILERS (3) | | |
| | | | | | | | 25 km/h | 25 km/h | 25 km/h | 10 km/h | 6 km/h |
| 4" | 3.00-4 | ER | 2.10-4 | 86 | 253 | 3,8 | 260 | 195 | 195 | 235 | 260 |
| | 4.00-4 | ER | 2.50C-4 | 102 | 303 | 6,8 | 535 | 412 | 412 | 485 | 535 |
| 8" | 15x4½-8 (125/75-8) | ER | 2.50D-8 | 103 | 375 | 8,8 | 1.040 | 800 | 800 | 945 | 1.040 |
| | 15x4½-8 (125/75-8) | ER | 3.00D-8 | 103 | 375 | 9 | 1.040 | 800 | 800 | 945 | 1.040 |
| 8" | 15x4½-8 (125/75-8) | ER FIX | 3.00D-8 | 103 | 375 | 9,3 | 1.040 | 800 | 800 | 945 | 1.040 |
| | 140/55-9 | ER | 4.00E-9 | 130 | 380 | 10 | 1.170 | 900 | 900 | 1.060 | 1.170 |
| 9" | 140/55-9 | ER FIX | 4.00E-9 | 130 | 380 | 10,3 | 1.170 | 900 | 900 | 1.060 | 1.170 |

(1) Sizes are intended for tyres not fitted on rims;
 (2) Capacity values indicated are in reference to ELTOR tyres mounted on vehicles whose speed with no cargo is less than 25 km/h (according to E.T.R.T.O. standards);
 (3) Only for interior courses inferior to 2.000 metres; if otherwise, contact dealer (according to E.T.R.T.O. standards).

QUALITY

SUPER-ELASTIC

FORZA

FORZA NO MARKING



NM
no marking

- The quality alternative for normal requirements and standard applications.
- Good traction.
- Low rolling resistance.
- High reliability.

SUPER-ELASTIC FORZA

QUALITY



| Ø | TYRE SIZE (inches) | PROFILE | RIM SIZE | TYRE DIMENSIONS (1) | | WEIGHT (kg) ± 2% | LOAD CAPACITY (KG) AT MAX SPEED (KM/H) (2) | | | | |
|-----|-----------------------|---------|----------|---------------------|-------------|------------------|--|------------------------|--------------|---------|--------|
| | | | | W (mm) ± 2% | D (mm) ± 2% | | CARRYING WHEEL 25 km/h | STEERING WHEEL 25 km/h | TRAILERS (3) | | |
| | | | | | | | 25 km/h | 25 km/h | 25 km/h | 10 km/h | 6 km/h |
| 8" | 4.00-8* | F1 | 3.00D-8 | - | - | - | 950 | 730 | 730 | 860 | 950 |
| | 4.00-8* | FIX F1 | 3.00D-8 | - | - | - | 950 | 730 | 730 | 860 | 950 |
| | 15x4½-8 (125/75-8) | F1 | 3.00D8 | 108 | 372,5 | 9 | 1.040 | 800 | 800 | 945 | 1.040 |
| | 15x4½-8 (125/75-8) | FIX F1 | 3.00D8 | 108 | 372,5 | 9,2 | 1.040 | 800 | 800 | 945 | 1.040 |
| | 5.00-8 | F1 | 3.00D-8 | 119 | 451,4 | 15,4 | 1.415 | 1.090 | 1.090 | 1.285 | 1.415 |
| | 5.00-8 | FIX F1 | 3.00D-8 | 119 | 451,4 | 15,8 | 1.415 | 1.090 | 1.090 | 1.285 | 1.415 |
| | 16x6-8 (150/75-8) | F1 | 4.33R-8 | 145 | 412,5 | 15,3 | 1.495 | 1.150 | 1.150 | 1.360 | 1.495 |
| | 16x6-8 (150/75-8) | FIX F1 | 4.33R-8 | 145 | 412,5 | 15,5 | 1.495 | 1.150 | 1.150 | 1.360 | 1.495 |
| 9" | 140/55-9 | F1 | 4.00E-9 | 130 | 380 | 9,7 | 1.170 | 900 | 900 | 1.060 | 1.170 |
| | 140/55-9 | FIX F1 | 4.00E-9 | 130 | 380 | 10 | 1.170 | 900 | 900 | 1.060 | 1.170 |
| | 6.00-9 | F1 | 4.00E-9 | 135 | 527 | 24,2 | 1.885 | 1.450 | 1.450 | 1.710 | 1.885 |
| | 6.00-9 | FIX F1 | 4.00E-9 | 135 | 527 | 24,4 | 1.885 | 1.450 | 1.450 | 1.710 | 1.885 |
| | 21x8-9 (200/75-9) | F1 | 6.00E-9 | 175 | 521 | 31,9 | 2.755 | 2.120 | 2.120 | 2.500 | 2.755 |
| | 21x8-9 (200/75-9) | FIX F1 | 6.00E-9 | 175 | 521 | 32,4 | 2.755 | 2.120 | 2.120 | 2.500 | 2.755 |
| | 200/50-10 | F1 | 6.50F-10 | 185 | 455 | 23,5 | 2.470 | 1.900 | 1.900 | 2.240 | 2.470 |
| | 200/50-10 | FIX F1 | 6.50F-10 | 185 | 455 | 23,4 | 2.470 | 1.900 | 1.900 | 2.240 | 2.470 |
| 10" | 23x9-10 (225/75-10) | F1 | 6.50F-10 | 192 | 579 | 43,3 | 3.445 | 2.650 | 2.650 | 3.125 | 3.445 |
| | 23x9-10 (225/75-10) | FIX F1 | 6.50F-10 | 192 | 579 | 43,5 | 3.445 | 2.650 | 2.650 | 3.125 | 3.445 |
| | 7.00-12 | F1 | 5.00S-12 | 168 | 653 | 45,3 | 2.920 | 2.240 | 2.240 | 2.645 | 2.920 |
| | 7.00-12 | FIX F1 | 5.00S-12 | 168 | 653 | 45,8 | 2.920 | 2.240 | 2.240 | 2.645 | 2.920 |
| | 23x10-12 (250/60-12) | F1 | 8.00G-12 | 227 | 579 | 46,3 | 3.770 | 2.900 | 2.900 | 3.420 | 3.770 |
| | 23x10-12 (250/60-12) | FIX F1 | 8.00G-12 | 227 | 579 | 46,8 | 3.770 | 2.900 | 2.900 | 3.420 | 3.770 |
| | 27x10-12 (250/75-12) | F1 | 8.00G-12 | 227 | 672 | 68,2 | 3.900 | 3.000 | 3.000 | 3.540 | 3.900 |
| | 27x10-12 (250/75-12) | FIX F1 | 8.00G-12 | 227 | 672 | 68,9 | 3.900 | 3.000 | 3.000 | 3.540 | 3.900 |
| 15" | 8.25-15 | F1 | 6.5-15 | 205 | 814 | 84,6 | 4.750 | 3.650 | 3.650 | 4.300 | 4.750 |
| | 8.25-15 | FIX F1 | 6.5-15 | 205 | 814 | 85,5 | 4.750 | 3.650 | 3.650 | 4.300 | 4.750 |
| | 28x9-15 (225/75-15) | F1 | 7.0-15 | 207 | 689 | 55,9 | 3.445 | 2.650 | 2.650 | 3.125 | 3.445 |
| | 28x9-15 (225/75-15) | FIX F1 | 7.0-15 | 207 | 689 | 57 | 3.445 | 2.650 | 2.650 | 3.125 | 3.445 |
| | 250-15 (250/70-15) | F1 | 7.0-15 | 207 | 715 | 62,9 | 4.745 | 3.650 | 3.650 | 4.310 | 4.745 |
| | 250-15 (250/70-15) | FIX F1 | 7.0-15 | 207 | 715 | 63,5 | 4.745 | 3.650 | 3.650 | 4.310 | 4.745 |
| | 300-15 (315/70-15) | F1 | 8.0-15 | 251 | 816 | 104,2 | 5.850 | 4.500 | 4.500 | 5.310 | 5.850 |
| | 300-15 (315/70-15) | FIX F1 | 8.0-15 | 251 | 816 | 105,1 | 5.850 | 4.500 | 4.500 | 5.310 | 5.850 |
| | 28x12½-15 (355/45-15) | F1 | 9.75-15 | 275 | 706 | 84 | 5.690 | 4.375 | 4.375 | 5.165 | 5.690 |
| | 28x12½-15 (355/45-15) | FIX F1 | 9.75-15 | 275 | 706 | 85 | 5.690 | 4.375 | 4.375 | 5.165 | 5.690 |
| | 355/65-15 (350-15) | F1 | 9.75-15 | 297 | 816 | 124,9 | 7.800 | 6.000 | 5.450 | 6.430 | 7.085 |
| | 355/65-15 (350-15) | FIX F1 | 9.75-15 | 297 | 816 | 125,8 | 7.800 | 6.000 | 5.450 | 6.430 | 7.085 |
| 20" | 10.00-20 | F1 | 7.0-20 | 230 | 1018 | 151,7 | 6.000 | 5.000 | 5.000 | 5.450 | 6.000 |
| | 10.00-20 | F1 | 7.5-20 | 230 | 1018 | 155 | 6.000 | 5.000 | 5.000 | 5.450 | 6.000 |
| | 10.00-20 | F1 | 8.0-20 | 230 | 1018 | 158,5 | 6.000 | 5.000 | 5.000 | 5.450 | 6.000 |
| | 12.00-20 | F1 | 8.0-20 | 230 | 1110 | 193 | 7.560 | 6.300 | 6.300 | 6.865 | 7.560 |
| | 12.00-20 | F1 | 8.5-20 | 230 | 1110 | 199 | 7.560 | 6.300 | 6.300 | 6.865 | 7.560 |

* In preparation

(1) Sizes are intended for tyres not fitted on rims;

(2) Capacity values indicated are in reference to FORZA tyres mounted on vehicles whose speed with no cargo is less than 25 km/h (according to E.T.R.T.O. standards);

(3) Only for interior courses inferior to 2.000 metres; if otherwise, contact dealer (according to E.T.R.T.O. standards).

BUDGET

SUPER-ELASTIC

JUMBO

JUMBO NO MARKING



NM
no marking

- Excellent quality/price ratio.
- Structure optimised for light applications.
- Good driving comfort.

SUPER-ELASTIC JUMBO

BUDGET

| Ø | TYRE SIZE (inches) | PROFILE | RIM SIZE | TYRE DIMENSIONS (1) | | WEIGHT (kg) ± 2% | LOAD CAPACITY (KG) AT MAX SPEED (KM/H) (2) | | | | |
|--------------------|----------------------|--------------------|----------|---------------------|-------------|------------------|--|------------------------|--------------|---------|--------|
| | | | | W (mm) ± 2% | D (mm) ± 2% | | CARRYING WHEEL 25 km/h | STEERING WHEEL 25 km/h | TRAILERS (3) | | |
| | | | | | | | 25 km/h | 25 km/h | 25 km/h | 10 km/h | 6 km/h |
| 4" | 4.00-4 | J2 | 2.50C-4 | 99 | 303 | 6,5 | 535 | 412 | 412 | 485 | 535 |
| 8" | 12x3,5-8 | JL | 3.00D-8 | 99 | 305 | 4,8 | 780 | 600 | 600 | 700 | 780 |
| | 4.00-8 | J2 | 3.00D-8 | 100,5 | 400 | 10,1 | 950 | 730 | 730 | 860 | 950 |
| | 4.00-8 | J2 BLOCK | 3.00D-8 | 100,5 | 400 | 10,2 | 950 | 730 | 730 | 860 | 950 |
| | 15x4,5-8 (125/75-8) | J2 | 3.00D-8 | 109 | 373 | 8,6 | 1.040 | 800 | 800 | 945 | 1.040 |
| | 15x4,5-8 (125/75-8) | J2 BLOCK | 3.00D-8 | 109 | 373 | 8,9 | 1.040 | 800 | 800 | 945 | 1.040 |
| | 15x4,5-8 (125/75-8) | JL | 3.25D-8 | 109 | 373 | 9,1 | 1.040 | 800 | 800 | 945 | 1.040 |
| | 5.00-8 | J2 | 3.00D-8 | 120 | 454 | 16 | 1.415 | 1.090 | 1.090 | 1.285 | 1.415 |
| | 5.00-8 | J2 BLOCK | 3.00D-8 | 120 | 454 | 16,3 | 1.415 | 1.090 | 1.090 | 1.285 | 1.415 |
| 9" | 16x6-8 (150/75-8) | J2 | 4.33R-8 | 151 | 414 | 15,5 | 1.495 | 1.150 | 1.150 | 1.360 | 1.495 |
| | 16x6-8 (150/75-8) | J2 BLOCK | 4.33R-8 | 151 | 414 | 15,8 | 1.495 | 1.150 | 1.150 | 1.360 | 1.495 |
| | 17x7-8 | JL | 4.33R-8 | 155,6 | 431,4 | 18,4 | 1.800 | 1.380 | 1.380 | 1.640 | 1.800 |
| | 18x7-8 (180/70-8) | J2 | 4.33R-8 | 147 | 448 | 19,5 | 2.145 | 1.650 | 1.650 | 1.945 | 2.145 |
| | 18x7-8 (180/70-8) | J2 BLOCK | 4.33R-8 | 147 | 448 | 19,6 | 2.145 | 1.650 | 1.650 | 1.945 | 2.145 |
| | 140/55-9 | J2 | 4.00E-9 | 123 | 380,3 | 10 | 1.170 | 900 | 900 | 1.060 | 1.170 |
| | 140/55-9 | J2 BLOCK | 4.00E-9 | 123 | 380,3 | 10,4 | 1.170 | 900 | 900 | 1.060 | 1.170 |
| | 6.00-9 | J2 | 4.00E-9 | 142 | 523 | 25 | 1.885 | 1.450 | 1.450 | 1.710 | 1.885 |
| 10" | 6.00-9 | J2 BLOCK | 4.00E-9 | 142 | 523 | 25,4 | 1.885 | 1.450 | 1.450 | 1.710 | 1.885 |
| | 21x8-9 (200/75-9) | J2 | 6.00E-9 | 185 | 519 | 32 | 2.755 | 2.120 | 2.120 | 2.500 | 2.755 |
| | 21x8-9 (200/75-9) | J2 BLOCK | 6.00E-9 | 185 | 519 | 32,4 | 2.755 | 2.120 | 2.120 | 2.500 | 2.755 |
| | 6.50-10 | J2 | 5.00F-10 | 165 | 569 | 34,6 | 2.340 | 1.800 | 1.800 | 2.125 | 2.340 |
| | 6.50-10 | J2 BLOCK | 5.00F-10 | 165 | 569 | 35 | 2.340 | 1.800 | 1.800 | 2.125 | 2.340 |
| | 7.50-10 | J2 | 5.50F-10 | 178 | 639 | 49,3 | 3.070 | 2.360 | 2.360 | 2.785 | 3.070 |
| | 200/50-10 | J2 | 6.50F-10 | 179,5 | 458,4 | 23,3 | 2.470 | 1.900 | 1.900 | 2.240 | 2.470 |
| | 200/50-10 | J2 BLOCK | 6.50F-10 | 179,5 | 458,4 | 24,1 | 2.470 | 1.900 | 1.900 | 2.240 | 2.470 |
| 12" | 23x9-10 (225/75-10) | J2 | 6.50F-10 | 197 | 576 | 42,5 | 3.445 | 2.650 | 2.650 | 3.125 | 3.445 |
| | 23x9-10 (225/75-10) | J2 BLOCK | 6.50F-10 | 197 | 576 | 42,9 | 3.445 | 2.650 | 2.650 | 3.125 | 3.445 |
| | 7.00-12 | J2 | 5.00S-12 | 169 | 649 | 45,6 | 2.920 | 2.240 | 2.240 | 2.645 | 2.920 |
| | 7.00-12 | J2 BLOCK | 5.00S-12 | 169 | 649 | 46 | 2.920 | 2.240 | 2.240 | 2.645 | 2.920 |
| | 23x10-12 (250/60-12) | J2 | 8.00G-12 | 228 | 578 | 46,1 | 3.770 | 2.900 | 2.900 | 3.420 | 3.770 |
| | 23x10-12 (250/60-12) | J2 BLOCK | 8.00G-12 | 228 | 578 | 46,7 | 3.770 | 2.900 | 2.900 | 3.420 | 3.770 |
| | 27x10-12 (250/75-12) | J2 | 8.00G-12 | 234 | 667 | 67,5 | 3.900 | 3.000 | 3.000 | 3.540 | 3.900 |
| | 27x10-12 (250/75-12) | J2 BLOCK | 8.00G-12 | 234 | 667 | 68,4 | 3.900 | 3.000 | 3.000 | 3.540 | 3.900 |
| 15" | 7.00-15 | J2 | 5.5-15 | 178 | 723 | 55,7 | 3.545 | 2.725 | 2.725 | 3.215 | 3.545 |
| | 7.00-15 | J2 BLOCK | 5.5-15 | 178 | 723 | 56,2 | 3.545 | 2.725 | 2.725 | 3.215 | 3.545 |
| | 7.50-15 | J2 | 6.0-15 | 205,5 | 752 | 73 | 3.900 | 3.000 | 3.000 | 3.540 | 3.900 |
| | 7.50-15 | J2 | 6.5-15 | 205,5 | 752 | 73,4 | 3.900 | 3.000 | 3.000 | 3.540 | 3.900 |
| | 7.50-15 | J2 BLOCK | 6.5-15 | 205,5 | 752 | 73,6 | 3.900 | 3.000 | 3.000 | 3.540 | 3.900 |
| | 8.25-15 | J2 | 6.5-15 | 209,4 | 818 | 90 | 4.750 | 3.650 | 3.650 | 4.300 | 4.750 |
| | 8.25-15 | J2 BLOCK | 6.5-15 | 209,4 | 818 | 90,8 | 4.750 | 3.650 | 3.650 | 4.300 | 4.750 |
| | 28x9-15 (225/75-15) | J2 | 7.0-15 | 213,5 | 700 | 60,7 | 3.445 | 2.650 | 2.650 | 3.125 | 3.445 |
| | 28x9-15 (225/75-15) | J2 BLOCK | 7.0-15 | 213,5 | 700 | 61,9 | 3.445 | 2.650 | 2.650 | 3.125 | 3.445 |
| | 250-15 (250/70-15) | J2 | 7.0-15 | 217,5 | 715 | 67,6 | 4.745 | 3.650 | 3.650 | 4.310 | 4.745 |
| | 250-15 (250/70-15) | J2 BLOCK | 7.0-15 | 217,5 | 715 | 68,1 | 4.745 | 3.650 | 3.650 | 4.310 | 4.745 |
| | 20" | 300-15 (315/70-15) | J2 | 8.0-15 | 262,1 | 828 | 113 | 5.850 | 4.500 | 4.500 | 5.310 |
| 300-15 (315/70-15) | | J2 BLOCK | 8.0-15 | 262,1 | 828 | 113,6 | 5.850 | 4.500 | 4.500 | 5.310 | 5.850 |
| 355/65-15 (350-15) | | J2 | 9.75-15 | 308,1 | 828 | 135 | 7.800 | 6.000 | 6.000 | 7.085 | 7.800 |
| 355/65-15 (350-15) | | J2 BLOCK | 9.75-15 | 308,1 | 828 | 135,4 | 7.800 | 6.000 | 6.000 | 7.085 | 7.800 |
| 10.00-20 | | J1 | 7.5-20 | 237 | 1017 | 148,1 | 6.000 | 5.000 | 5.000 | 5.450 | 6.000 |
| 10.00-20 | | J1 | 8.0-20 | 237 | 1017 | 149,2 | 6.000 | 5.000 | 5.000 | 5.450 | 6.000 |

(1) Sizes are intended for tyres not fitted on rims;
 (2) Capacity values indicated are in reference to JUMBO tyres mounted on vehicles whose speed with no cargo is less than 25 km/h (according to E.T.R.T.O. standards);
 (3) Only for interior courses inferior to 2.000 metres; if otherwise, contact dealer (according to E.T.R.T.O. standards).

BSC

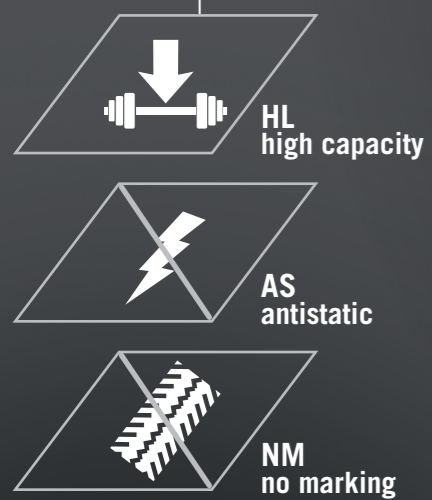
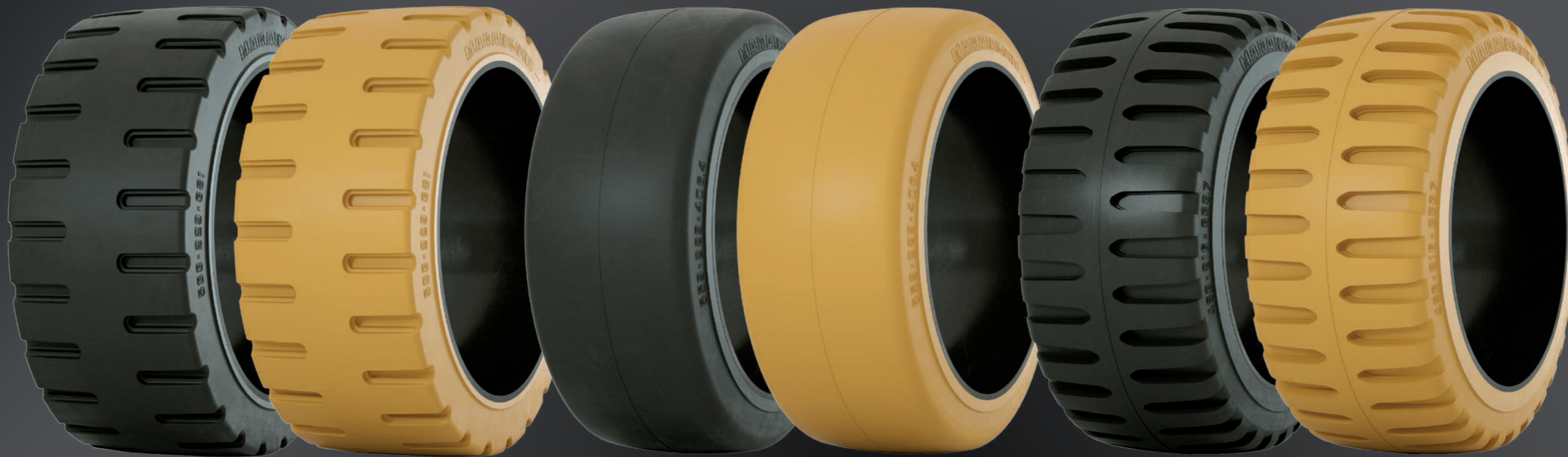
BSC NO MARKING

BL

BL NO MARKING

BS

BS NO MARKING



The press-on-band tyres by Marangoni are characterized by low rolling resistance, high heat dissipation capacity and excellent stability. The structure is characterized by the use of two compounds, so as to increase comfort.

BSC

- Tread with optimal traction and minimal deformation during the transport of loads.

BL

- Smooth tread with wider footprint for maximum stability and no vibrations.

BS

- Tread offering the best balance between stability and traction.

CONVENTIONAL INDUSTRIAL TYRES

SW

LT



- Deep tread.
- Good stability.
- Resistant to damage to sidewalls: Side Wall structure.
- Good traction.
- Good driving comfort.
- Complete SET*: Tyre + Tube + Flap

APPLICATIONS

- Forklifts.
- Small-sized industrial tractors.
- Indoor trailers.
- Airport vehicles.

* The conventional industrial tyres SW are TT (Tube Type) models for which complete assembly of tube and flap is recommended.

CONVENTIONAL INDUSTRIAL TYRES



| | TYRE SIZE | PROFILE | PR | TYPE | RIM WIDTH | INFLATION PRESSURE ETRTO (bar) | OVERALL DIAMETER (mm) ±2% | OVERALL SECTION WIDTH (mm) ±2% | REFERENCE LOAD (kg) 25 km/h | STATIC LOAD CAPACITY ETRTO (kg) | SET WEIGHT (kg) |
|----|-----------------------|---------|----|------|---------------------|-----------------------------------|------------------------------|-----------------------------------|--------------------------------|------------------------------------|--------------------|
| 1 | 4.00-8* | YA | 6 | TT | 3.00D-8 | 4,25 | 420 | 110 | 600 | 905 | 3,90 |
| 2 | 5.00-8 | SW | 8 | TT | 3.00D; 3.75L-8 | 8,25 | 485 | 150 | 950 | 1.435 | 8,10 |
| 3 | 15x4.5-8 (125/75-8)* | LT | 12 | TT | 3.25L-8 | 9,00 | 385 | 122 | 800 | 1.210 | 4,25 |
| 4 | 16x6-8 (150/75-8) | SW | 18 | TT | 4.33R-8 | 10,50 | 420 | 155 | 1.180 | 1.780 | 9,00 |
| 5 | 18x7-8 (180/70-8) | SW | 16 | TT | 4.33R-8 | 10,00 | 465 | 175 | 1.650 | 2.490 | 12,30 |
| 6 | 6.00-9 | SW | 14 | TT | 4.00E-9 | 10,50 | 540 | 170 | 1.495 | 2.260 | 13,05 |
| 7 | 21x8-9 (200/75-9) | SW | 16 | TT | 6.00E-9 | 10,00 | 530 | 215 | 2.120 | 3.200 | 21,25 |
| 8 | 6.50-10 | SW | 14 | TT | 5.00; 5.50F-10 | 10,00 | 590 | 190 | 1.800 | 2.720 | 16,10 |
| 9 | 23x9-10 (225/75-10) | SW | 20 | TT | 7.00F-10 | 10,00 | 585 | 230 | 2.650 | 4.000 | 23,35 |
| 10 | 7.00-12 | SW | 16 | TT | 5.00S-12 | 10,00 | 675 | 200 | 2.240 | 3.380 | 22,35 |
| 11 | 23x10-12 (250/60-12) | SW | 22 | TT | 8.00G-12 | 10,50 | 600 | 260 | 2.985 | 4.510 | 30,35 |
| 12 | 27x10-12 (250/75-12) | SW | 20 | TT | 8.00G-12 | 10,00 | 695 | 270 | 3.550 | 5.360 | 33,65 |
| 13 | 7.00-15 | SW | 16 | TT | 5.00; 5.50-15 | 10,00 | 740 | 205 | 2.725 | 4.115 | 24,55 |
| 14 | 7.50-15 | SW | 16 | TT | 5.00; 6.00; 6.50-15 | 10,00 | 785 | 225 | 3.000 | 4.530 | 27,75 |
| 15 | 28x9-15 (225/75-15) | SW | 16 | TT | 7.0-15 | 10,50 | 715 | 220 | 3.090 | 4.665 | 27,10 |
| 16 | 32x12.1-15 | SW | 24 | TT | 9.75-15 | 10,30 | 810 | 325 | 4.835 | 7.300 | 64,70 |
| 17 | 8.25-15 | SW | 18 | TT | 6.0; 6.5; 7.0-15 | 9,25 | 840 | 255 | 3.650 | 5.510 | 43,20 |
| 18 | 250-15 (250/70-15) | SW | 20 | TT | 7.0; 7.5-15 | 10,00 | 735 | 245 | 3.875 | 5.850 | 36,45 |
| 19 | 300-15 (315/70-15) | SW | 20 | TT | 8.0-15 | 9,00 | 820 | 280 | 5.000 | 7.550 | 56,55 |
| 20 | 28x12½-15 (355/45-15) | SW | 24 | TT | 9.75-15 | 10,50 | 710 | 305 | 3730 | 5630 | 45,40 |
| 22 | 9.00-20 | LT | 14 | TT | 7.00-20 | 7,60 | 1.034 | 259 | 4.500 | 6.795 | 48,50 |
| 23 | 10.00-20 | SW | 20 | TT | 7.0; 7.50; 8.0-20 | 10,00 | 1.070 | 290 | 5.320 | 8.035 | 103,50 |
| 24 | 12.00-20 | SW | 20 | TT | 8.00; 8.50; 9.00-20 | 10,00 | 1.145 | 320 | 6.900 | 10.420 | 103,50 |

* Only tyre and tube without flap.

Reinforced Sizes for Industrial Application on Hard Improved Surfaces Coefficients to be used for tyres in next table

| MAXIMUM SPEED (km/h) (1) | VARIATION IN LOAD CAPACITY (%) | |
|--------------------------|---|--|
| | Steer positions Counter Balanced Lift Truck and Other Vehicles (2) | Drive positions Counter Balanced Lift Truck (2) |
| Static (4) | +44 | +80 |
| Creep (3) (4) | +28 | +60 |
| 5 | +16 | +45 |
| 10 | +8 | +35 |
| 15 | +4 | +30 |
| 20 | +2 | +27 |
| 25 | 0 | +25 |
| 30 | -3 | +22 |

This table applies up to rim code up to 35 including wide base tyres. For larger sizes consult tyre manufacturers.

(1) For speeds between 5 km/h and creep, interpolations are permitted.

(2) These coefficients do not apply to all tread patterns, consult the tyre Manufacturers.

(3) creep means a movement of equipment at a very low speed (commonly not over 120 m. in 60 minutes)

(4) Important: creep and static conditions are extremely demanding for the tyre/rim assembly, so before using this load capacities you must consult the tyre, rim and wheel manufacturers.

**CONVENTIONAL SKID STEER TYRES
FOR SMALL-SIZED MACHINES**

SS SD SKZ+ HA-SKZ



SS

- Standard tread with sidewall properties.
- Good traction.

SD

- Resistant tread reinforced in the middle.
- Compound resistant to punctures.
- Balanced tread wear.
- Reinforced sidewalls.

SKZ+

- Sturdy tyres for extreme conditions.
- High pattern: improves performance and tyre life.
- Good self-cleaning properties.

HA SKZ

- Extra deep and non-directional tread.
- Average block/space ratio: long life and good traction on all road surfaces.
- Excellent compound.
- Square profile.



| | TYRE SIZE | PROFILE | PR | TYPE | RIM WIDTH | INFLATION PRESSURE ETRTO (bar) | OVERALL DIAMETER (mm) ±2% | OVERALL SECTION WIDTH (mm) ±2% | LOAD CAPACITY (kg) | | WEIGHT (kg) |
|----|-------------|---------|----|------|-----------|--------------------------------|---------------------------|--------------------------------|--------------------|---------|-------------|
| | | | | | | | | | 8 km/h | 16 km/h | |
| 1 | 5.70-12 | SD | 6 | TL | 4.50 | 4,10 | 570 | 146 | 660 | 520 | 7,90 |
| 2 | 23x8.50-12 | SS | 6 | TL | 7.0 | 3,40 | 575 | 215 | 820 | 650 | 12,70 |
| 3 | 27x8.50-15 | SS | 8 | TL | 7.0 | 4,80 | 680 | 210 | 1.250 | 990 | 15,25 |
| 4 | 27X10.50-15 | SS | 8 | TL | 8.5 | 3,50 | 700 | 260 | 1.280 | 1.010 | 18,10 |
| 5 | 10x16.5 | SD | 10 | TL | 8.25 | 5,20 | 773 | 264 | 1.685 | 1.560 | 20,20 |
| 6 | 10x16.5 | SS | 10 | TL | 8.25 | 5,10 | 775 | 280 | 1.685 | 2.135 | 22,70 |
| 7 | 10x16.5 | SKZ+ | 10 | TL | 8.25 | 5,20 | 800 | 279 | 1.685 | 2.135 | 20,20 |
| 8 | 10x16.5 | HA SKZ | 10 | TL | 8.25 | 5,20 | 773 | 264 | 1.685 | 2.135 | 31,80 |
| 9 | 12x16.5 | SD | 12 | TL | 9.75 | 5,50 | 831 | 307 | 2.890 | 2.285 | 24,30 |
| 10 | 12x16.5 | SS | 12 | TL | 9.75 | 5,60 | 845 | 330 | 2.890 | 2.285 | 36,60 |
| 11 | 12x16.5 | SKZ+ | 12 | TL | 9.75 | 5,50 | 838 | 325 | 2.890 | 2.285 | 40,25 |
| 12 | 12x16.5 | HA SKZ | 12 | TL | 9.75 | 5,50 | 840 | 310 | 2.890 | 2.285 | 39,35 |
| 13 | 14x17.5 | SD | 14 | TL | 10.5 | 5,60 | 945 | 360 | 3.875 | 3.060 | 42,10 |
| 14 | 15x19.5 | SD | 14 | TL | 11.75 | 5,60 | 1.020 | 415 | 4.565 | 3.605 | 56,00 |

**CONVENTIONAL TYRES FOR INDUSTRIAL TRACTORS
FOR CONSTRUCTION AND ROAD WORKS**

IM54 TI09



IM54

- Structure ensuring excellent traction.
- Suitable for industrial and agricultural applications.

TI09

- Industrial pattern with sturdy tread.
- Compound highly resistant to abrasion.
- Good traction and self-cleaning properties.



| | TYRE SIZE | PROFILE | PR | TYPE | RIM WIDTH | INFLATION PRESSURE ETRTO (bar) | OVERALL DIAMETER (mm) ±2% | OVERALL SECTION WIDTH (mm) ±2% | LOAD CAPACITY (kg) | | WEIGHT (kg) |
|---|------------|---------|----|------|-----------|--------------------------------|---------------------------|--------------------------------|--------------------|--|-------------|
| | | | | | | | | | 40 km/h | | |
| 1 | 15.5/80-24 | IM54 | 16 | TL | W12 | 4,00 | 1.260 | 415 | 4.680 | | 70,50 |
| 2 | 18.4-26 | TI09 | 12 | TL | 16.00 | 2,50 | 1.420 | 490 | 4.000 | | 93,50 |
| 3 | 16.9-28 | TI09 | 14 | TL | 15.00 | 3,00 | 1.415 | 460 | 3.860 | | 83,50 |

**MULTI-PURPOSE CONVENTIONAL TYRES
FOR MANUFACTURING MACHINES**

MT63

MT45

MT54



MT90

MT72



MT63

- Tread for on/off-road applications.
- Good traction.

Applications:

Municipality vehicles used on roads.
Agricultural vehicles.
Special service vehicles.

MT45

- Tread with good traction and self-cleaning properties for on/off-road applications.
- Good stability and manoeuvrability.

MT54

- Multipurpose tread with excellent pattern for special applications.
- Good traction and self-cleaning properties.

MT90

- Tread with good traction characteristics and increased stability.
- Suitable for excavators and telescopic hoisting devices.

MT72

- Tread especially suitable for loader applications.
- Good traction and self-cleaning properties.



| | TYRE SIZE | PROFILE | PR | TYPE | RIM WIDTH | INFLATION PRESSURE ETRTO (bar) | OVERALL DIAMETER (mm) ±2% | OVERALL SECTION WIDTH (mm) ±2% | LOAD CAPACITY (kg) 40 km/h | WEIGHT (kg) |
|----|------------|---------|----|------|-----------|--------------------------------|---------------------------|--------------------------------|----------------------------|-------------|
| 1 | 10.5/80-18 | MT45 | 10 | TL | 9.00 | 3,70 | 910 | 280 | 1.950 | 31,90 |
| 2 | 12.5/80-18 | MT45 | 12 | TL | W9 | 3,70 | 990 | 310 | 2.650 | 42,10 |
| 3 | 18-19.5 | MT63 | 18 | TL | 14.00 | 6,75 | 1.090 | 455 | 5.605 | 75,00 |
| 4 | 10.5-20 | MT54 | 10 | TL | 9.00 | 3,75 | 960 | 275 | 2.070 | 31,80 |
| 5 | 12.5-20 | MT54 | 12 | TL | 11.00 | 3,50 | 1.055 | 330 | 2.300 | 48,80 |
| 6 | 14.5-20 | MT54 | 14 | TL | 11.00 | 3,50 | 1.095 | 355 | 2.795 | 58,40 |
| 7 | 405/70-20 | MT54 | 14 | TL | 13.00 | 3,50 | 1.090 | 385 | 3.335 | 60,50 |
| 8 | 405/70-20 | MT72 | 14 | TL | 13.00 | 3,50 | 1.150 | 405 | 3.335 | 67,20 |
| 9 | 18-22.5 | MT90 | 18 | TL | 14.00 | 6,75 | 1.185 | 477 | 6.095 | 95,00 |
| 10 | 405/70-24 | MT54 | 14 | TL | 13.00 | 3,50 | 1.190 | 415 | 3.620 | 76,00 |
| 11 | 405/70-24 | MT72 | 14 | TL | 13.00 | 3,50 | 1.200 | 420 | 3.620 | 78,30 |

**MULTI-PURPOSE CONVENTIONAL TYRES
FOR MANUFACTURING MACHINES**

MT50 MT54



- Classical tread with excellent pattern for all applications.
- Good traction and self-cleaning properties.



| | TYRE SIZE | PROFILE | PR | TYPE | RIM WIDTH | INFLATION PRESSURE ETRTO (bar) | OVERALL DIAMETER (mm) ±2% | OVERALL SECTION WIDTH (mm) ±2% | LOAD CAPACITY (kg) 25 km/h | WEIGHT (kg) |
|---|-----------|---------|----|------|-----------|--------------------------------|---------------------------|--------------------------------|----------------------------|-------------|
| 1 | 8.25-20 | MT50 | 14 | TT | 6.5-20 | 6.90 | 970 | 232 | 2.180 | 35,00 |
| 2 | 8.25-20 | MT54 | 14 | TT | 6.5-20 | 6,75 | 970 | 232 | 2.180 | 35,00 |
| 3 | 9.00-20 | MT50 | 14 | TT | 7.0-20 | 7,20 | 1.012 | 256 | 2.650 | 43,00 |
| 4 | 9.00-20 | MT54 | 14 | TT | 7.0-20 | 7,00 | 1.012 | 256 | 2.650 | 43,00 |
| 5 | 10.00-20 | MT50 | 16 | TT | 7.5-20 | 7,60 | 1.050 | 282 | 3.190 | 50,00 |
| 6 | 10.00-20 | MT54 | 16 | TT | 7.5-20 | 7,50 | 1.050 | 280 | 3.190 | 50,00 |

**SERVICE, ACCESSORIES - SOLID TYRES
FITTING PRESS 250 TON**



FITTING AND REMOVAL PRESS FOR SUPER-ELASTIC AND CUSHION TYRES

This press is able to perform fitting and removal operations of all sizes of super-elastic tyres (with the exception of 14.00-24). The machine's fundamental characteristics are: reability, speed, power and precision. The press is composed of a metal structure, an adjustable lower work platform with area of 200 mm and an upper moveable platform with 600 mm of usable stroke. Manually controlled hydraulic movements. The press does not require a foundation. The press comes complete with CE certification, an Instruction Booklet for fitting and removal operations, as well as Use and Maintenance Booklet. The equipment necessary for fitting and removal of the super-elastic and cushion tyres is sold separately upon request.

SUPER-ELASTIC TYRES INSTALLATION EQUIPMENT

- The installation equipment is available for wheel size from 8" to 20".
- Each size is painted in a different colour.



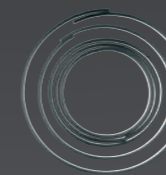
1 - Thrusting ring



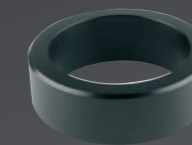
2 - Bevelled ring



3 - Press ring



4 - FIX de-mounting ring (up to 15")



5 - Seating rim

SOLID TYRES - USER INSTRUCTIONS, MAINTENANCE, REPLACEMENT AND CALCULATION OF WEAR LIMITS

1) INTRODUCTION

Tyres are the only contact between the vehicle and the ground. It is therefore of paramount importance that they are maintained in good condition at all times, and that when the time comes to change them, correct replacements are done.

The tyres fitted to your vehicle as Original Equipment were selected by the vehicle and tyre manufacturers concerned taking into account the intended operations of the vehicle. Changes in tyre type, size and load capacity should not be made without first checking with the tyre and/or vehicle manufacturer regarding possible effects on vehicle behaviour and safety.

2) FITTING AND REMOVAL OF TYRES

It is recommended that these operations be entrusted only to specialists who have the necessary equipment and expertise. Inexpert fitment may lead to personal injury and concealed damage to tyres and wheels.

No special equipment is necessary for fitting solid tyres on centrally divided conical rims, but appropriate presses and accessories are required for fitment on off-set divided conical rims, cylindrical rims and pneumatic tyre rims.

The published instructions of the tyre manufacturer must be strictly followed. Only approved proprietary tyre lubricants should be used.

To avoid damage to the base of the tyre, it must be placed on the rim concentrically and parallel to the axis. Only rims recommended by the tyre manufacturer must be used.

3) TYRE LOAD AND SPEED

Tyre load capacities are specified per tyre. Published Standards or manufacturers' Manuals should be consulted to obtain the actual values applicable to a particular application at the speed specified, up to a maximum of 25 km/h.

Load interpolation within the specified speed steps is not permitted and the speed rating of the tyre must be at least equal to the maximum speed capability of the unladen vehicle.

Continuous running should be avoided in order, to prevent excessive heat build-up which may lead to tyre break-up.

4) TYRE MAINTENANCE

Although solid tyres require relatively little maintenance, they should be inspected from time to time in order to check their suitability for further use.

5) TYRE REPLACEMENT

Worn or damaged tyres must be replaced in accordance with the tyre manufacturer's recommendations. Also, national legal requirements should be checked as they vary from Country to country. When replacing a tyre, special attention should be paid to the condition and suitability of the rim, as rim damage and incorrect fitment can result in tyre break-up.

6) TYRE AGEING

Tyres age even if they have not been used or have only been used occasionally. Rubber cracking may be evidence of ageing. Exposure to sunlight, heat and ozone will accelerate this process. Aged tyres should be examined by a tyre specialist to check their suitability for further use.

7) TYRE MIXING

Tyres mounted on the same axle must be of the same type and size and must have approximately the same external diameter.

8) TREAD WEAR

8.1 INTRODUCTION

The limit for the tread wear of industrial vehicles is not defined by national or international standards. Several manufacturers provide instructions solely for their products. Recommendations by tyre manufacturers should always be followed. However, in case no recommendations are provided by manufacturers, please abide by the contents published in this standard.

8.2 PURPOSE

This standard suggests tread wear limits for solid tyres used on industrial vehicles that operate under conditions that are not regulated by the Highway Code and are to be used in case no instructions are provided by the

manufacturer of the vehicle or tyres. NOTE: Industrial vehicles that operate on public roads must be in order and comply with traffic circulation standards.

8.3 HAZARDS DUE TO EXCESSIVE TYRE TREAD WEAR

The hazards due to excessive tyre wear are the following:

- Loss of load capacity that promotes the accelerated wear of the tread and leads to overheating of the tyre.
- Loss of adhesion while accelerating or braking on unstable road conditions.
- Hazards are heightened if the tyres mounted on the same axle are worn differently.
- Reduction in the vehicle's stability.
- Loss of the vehicle's directional control.
- Uneven load on twinned tyres.

8.4 REDUCING HAZARDS

The hazards mentioned in the foregoing section can be reduced if: The tyres mounted on the same axle are built by the same manufacturer, have the same size and are worn equally (this applies to any type of tyre).

8.5 tyre tread wear limits

1) Pneumatic tyre rim sizes

Wear indicators or Kerbing Rib are recommended. Solid Rubber tyres for Pneumatic Rims may be used until the tread is worn to the wear indicator, if the tyre has such a marking, or to the top of the kerbing rib, see page IS.3 of EDI. Where there is no indicator, use the tyre until 3/4 of the original total thickness of the tyre remains.

To calculate the minimum diameter corresponding to this wear limit, measure the outside diameter of the worn tyre, the outside diameter of an unworn tyre of the same type, make and size, and the diameter of the wheel rim. The minimum permitted diameter of the worn tyre is given by the formula:

$$D_{\text{worn}} = 3/4 (D_{\text{new}} - D_{\text{rim}}) + D_{\text{rim}}$$

where D_{worn} = the outside diameter of the worn tyre
 D_{new} = the outside diameter of an unworn
 D_{rim} = the diameter of the wheel rim

2) Press-on-band, cured-on-band and conical base tyres (rubber and non-rubber)

Press-on-band, cured-on and conical base tyres may be used until 2/3 of the original total radial thickness of the tyre remains, as given by the formula:

Cured-on tyres:

$$D_{\text{worn}} = 2/3 (D_{\text{new}} - D_{\text{rim}}) + D_{\text{rim}}$$

Press-on-band and conical base tyres:

$$D_{\text{worn}} = 2/3 (D_{\text{new}} - D_{\text{rim}} - 20) + (D_{\text{rim}} + 20)$$

Notes:

- All dimensions are measured in millimetres.
- The outside diameter of the tyre D_{worn} and D_{new} may be calculated by measuring the circumference of the tyre with a flexible tape, and calculating the diameter from the formula:

$$\text{Diameter} = \frac{\text{Circumference}}{\pi}$$

TREAD WEAR INDICATOR (TWI) Marangoni recommends for tyres not to be worn beyond the TWI (Tread Wear Indicator) positioned on the tread of the tyre.

The height of the TWI was defined according to a study based on safety and cost savings for the user. However, in case there is no TWI, Marangoni recommends to replace the tyres for safety reasons when 10% of the original tread is worn.

General conditions of sales available on marangoni.com



Marangoni S.p.A.
Via del Garda, 6
38068 Rovereto (TN) Italy
Tel. +39 0464 301111
Fax +39 0464 301123
industrial.tyres@marangoni.com
marangoni.com

MARANGONI ™