



PASSENGER CAR,SUV AND LIGHT TRUCK
BROCHURE



Shandong Xinghongyuan Tire Co., Ltd. is located in the red revolutionary district, the hometown of Saint Liu Hong -Shandong Mengyin, a national high -tech enterprise, and a leading science and technology company in Shandong Province. The company's annual output of 12 million sets of large -wheeled pupae and high -performance car tire project started construction in November 2013, with a registered capital of 490 million yuan, a total investment of 2.6 billion yuan, covering an area of 536 acres.

At present, the company has formed the production capacity of 12 million car tires an annual output of car tires, mainly includes four leading brands: Hilo, Annaite, Anchee, and Premme. The company and products have passed ISO/TS16949, ISO9001 quality management system certification. OHSAS18001 occupational health and safety management system certification, CCC, US DOT, European ECE, Gulf GCC, Brazil Inmetro, Indian BIS, Nigeria Soncap and other product certifications. The laboratory has approved the national ISO/IEC 17025 laboratory.

We work to the concept of **“Low carbon, Green, Efficient Environment”** and have world class production and testing equipment. Using the most advanced low-rolling resistance formula and structure design we produce safe, comfortable, high performance green tyres. To date we have developed in excess of 60 sizes of passenger car tyres. Our leading brand names include ANNAITE, HILO, ANCHEE and XINGHONGYUAN. The well known HILO brand has been awarded the trademark for ongoing development and export by the Chinese Institute of Industry and Commerce.

According to our managing principle **“Quality is our life, and makes our tyre be the global first class brand”** we take the quality of the tyre as our priority. Our tyres have passed certification by many well-known Technical Organizations and Quality Standards including DOT, ECE, CCC, INMETRO, GCC, SONCAP, BIS, ISO9001, ISO14001, ISO/TS16949, OHSAS18001 etc. Our products are sold to over 100 countries and regions such as Europe, Africa, Middle East, South East Asia, Latin America and North America.

With our high quality product, competitive pricing, on-time delivery and superb after sales service we have a reputation of being a reliable, trustworthy enterprise supplying an excellent product, to both the domestic and export markets. We would like to invite you to join us with a view of developing a long term business relationship.

CONTENTS

PASSENGER

GREEN PIUS GENESYS XP1 GREEN XP2

01-07

RUN-FLAT

SAFETY XF8

08-08

ULTRA HIGH PERFORMANCE

VANTAGE XU1

09-10

SUV

SPORT XV1

11-12

LIGHT TRUCK

BRAWN XC1 X-TERRAIN XT1 TRAILER XT2 GUARD XT3

13-16

WINTER TYRE

ARCTIC XS1 ARCTIC S3 ARCTIC S6 ARCTIC S-8 ARCTIC S-9 X-TERRAIN MT1

17-21



HP/UHP/SUV/LT/WINTER TYRE/RUN-FLAT

PATTERN SUMMARY

HP



GREEN PLUS



GENESYS XP1



GREEN XP2

LT



BRAWN XC1



X-TERRAIN XT1



TRAILER XT2

UHP



VANTAGE XU1



GUARD XT3



X-TERRAIN MT1

SUV



SPORT XVI

WINTER-TYRE



ARCTIC XS1



ARCTIC S3



ARCTIC S6

RUN-FLAT



SAFETY XF8



arctic s-8



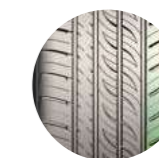
ARCTIC S-9



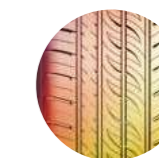
GREEN PLUS

TIRE SIZE	LOAD INDEX/ SPEED SYMBOL	STD. RIM (inch)	SECTION WIDTH (mm)	OVERALL DIAMETER (mm)	MAX LOAD (lbs)		MAX PRESSURE (PKa) (PSI)		UTQG			
13 inch'												
155/65R13	73T	4.50B	157	532	365	805	300	44	480 AA	70	C	D
155/70R13	75T	4.50B	157	548	387	853	300	44	480 AA	70	C	D
155/80R13	79T	4.50B	157	578	437	963	300	44	480 AA	70	C	D
165/65R13	77T	5.00B	170	544	412	908	300	44	480 AA	70	C	D
165/70R13	79T	5.00B	170	562	437	963	300	44	480 AA	70	C	D
165/80R13	83T	4.50B	165	594	487	1074	300	44	480 AA	70	C	D
175/60R13	77H	5.00B	177	540	412	908	300	44	480 AA	70	C	D
175/70R13	82T	5.00B	177	576	475	1047	300	44	480 AA	70	C	D
185/70R13	86T	5.50B	189	590	530	1168	300	44	480 AA	70	C	D
14 inch'												
165/60R14	75H	5J	170	554	387	853	300	44	480 AA	70	C	D
165/65R14	79T	5J	170	570	437	963	300	44	480 AA	70	C	D
165/70R14	81T	5J	170	588	462	1019	300	44	480 AA	70	C	D
175/65R14	82T	5J	177	584	475	1047	300	44	480 AA	70	C	D
175/65R14	82H	5J	177	584	475	1047	300	44	480 AA	70	C	D
175/65R14	86TXL	5J	177	584	530	1168	340	50	480 AA	71	C	D
175/70R14	84T	5J	177	602	500	1102	300	44	480 AA	70	C	D
175/70R14	88T XL	5J	177	602	560	1235	340	50	480 AA	71	C	D
185/55R14	80H	6J	194	560	450	992	300	44	480 AA	70	C	D
185/60R14	82H	5½J	189	578	475	1047	300	44	480 AA	70	C	D
185/60R14	82T	5½J	189	578	475	1047	300	44	480 AA	70	C	D
185/65R14	86H	5½J	189	596	530	1168	300	44	480 AA	70	C	D
185/70R14	88T	5½J	189	616	560	1235	300	44	480 AA	70	C	D
185/70R14	88H	5½J	189	616	560	1235	300	44	480 AA	70	C	D
195/60R14	86H	6J	201	590	530	1168	300	44	480 AA	71	C	D
195/70R14	91T	6J	201	630	615	1356	300	44	480 AA	71	C	D
195/70R14	91H	6J	201	630	615	1356	300	44	480 AA	71	C	D
205/60R14	88H	6	209	602	560	1235	300	44	480 AA	71	C	D
205/70R14	98T XL	6J	209	644	750	1653	340	50	480 AA	72	C	C

TIRE SIZE	LOAD INDEX/ SPEED SYMBOL	STD. RIM (inch)	SECTION WIDTH (mm)	OVERALL DIAMETER (mm)	MAX LOAD (lbs)		MAX PRESSURE (PKa) (PSI)		UTQG			
15 inch'												
175/65R15	84H	5J	177	609	500	1102	300	44	480 AA	70	C	D
185/55R15	82V	6J	194	585	475	1047	300	44	480 AA	70	C	D
185/60R15	84H	5½J	189	603	500	1102	300	44	480 AA	70	C	D
185/60R15	88H XL	5½J	189	603	560	1235	340	50	480 AA	71	C	D
185/65R15	88T	5½J	189	621	560	1235	300	44	480 AA	70	C	D
185/65R15	88H	5½J	189	621	560	1235	300	44	480 AA	70	C	D
195/50R15	82V	6J	201	577	475	1047	300	44	480 AA	71	C	D
195/55R15	85V	6J	201	595	515	1135	300	44	480 AA	71	C	D
195/60R15	88H	6J	201	615	560	1235	300	44	480 AA	71	C	D
195/60R15	88V	6J	201	615	560	1235	300	44	480 AA	71	C	D
195/65R15	91H	6J	201	635	615	1356	300	44	480 AA	71	C	D
195/65R15	91V	6J	201	635	615	1356	300	44	480 AA	71	C	D
195/65R15	95H XL	6J	201	635	690	1521	340	50	480 AA	72	C	D
205/60R15	91H	6J	209	627	615	1356	300	44	480 AA	71	C	D
205/60R15	91V	6J	209	627	615	1356	300	44	480 AA	71	C	D
205/65R15	94H	6J	209	647	670	1477	300	44	480 AA	71	C	D
205/65R15	94V	6J	209	647	670	1477	300	44	480 AA	71	C	D
215/60R15	94H	6½J	221	639	670	1477	300	44	480 AA	71	C	D
215/65R15	96H	6½J	221	661	710	1565	300	44	480 AA	71	C	C
215/65R15	100H XL	6½J	221	661	800	1765	340	50	480 AA	72	C	C



Outside with wide ribs and closed shoulder for vehicle responsiveness and cornering performance. Inside with wide grooves and high sipe density for braking, acceleration and maximizing wet/snow evacuation.



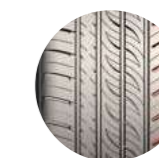
Jointless "0" degree spiral nylon cover and wide steel belts for high driving safety, comfort and durability.



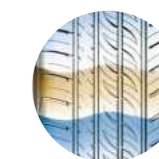
Jointless mono strand bead wire and hard bead filler strengthen the link between tire and rim for precise driving experience.



High-grip silica tread compound delivers exceptional braking and handling in wet and dry conditions.



The walls of the outside rib carved with small channels to reduce driving noise.



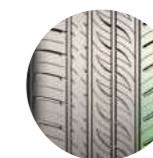
5-variable pitch alignment for a quiet driving environment.



GREEN PLUS

TIRE SIZE	LOAD INDEX/SPEED SYMBOL	STD. RIM (inch)	SECTION WIDTH (mm)	OVERALL DIAMETER (mm)	MAX LOAD (KGS)	MAX LOAD (lbs)	MAX PRESSURE (PKa)	MAX PRESSURE (PSI)	UTQG			
16 inch'												
185/50R16	81V	6J	194	592	462	1019	300	44	480 AA	70	C	D
195/45R16	84V XL	6½J	195	582	500	1102	340	50	480 AA	72	C	D
195/55R16	87V	6J	201	620	545	1201	300	44	480 AA	71	C	D
195/55R16	91V XL	6J	201	620	615	1356	340	50	480 AA	72	C	D
195/55R16	91W XL	6J	201	620	615	1356	340	50	480 AA	72	C	D
205/45ZR16	87W XL	7J	206	590	545	1201	340	50	480 AA	72	C	D
205/50R16	87V	6½J	214	612	545	1201	300	44	480 AA	71	C	D
205/50R16	87W	6½J	214	612	545	1201	300	44	480 AA	71	C	D
205/50R16	91W XL	6½J	214	612	615	1356	340	50	480 AA	72	C	D
205/55R16	91V	6½J	214	632	615	1356	300	44	480 AA	71	C	D
205/55R16	91W	6½J	214	632	615	1356	300	44	480 AA	71	C	D
205/55R16	94V XL	6½J	214	632	670	1477	340	50	480 AA	72	C	D
205/55R16	94W XL	6½J	214	632	670	1477	340	50	480 AA	72	C	D
205/60R16	92H	6J	209	652	630	1389	300	44	480 AA	71	C	D
205/60R16	92V	6J	209	652	630	1389	300	44	480 AA	71	C	D
205/60R16	96H XL	6J	209	652	710	1565	340	50	480 AA	72	C	C
215/55R16	93V	7J	226	642	650	1433	300	44	480 AA	71	C	D
215/55R16	97V XL	7J	226	642	730	1609	340	50	480 AA	72	C	C
215/55R16	97W XL	7J	226	642	730	1609	340	50	480 AA	72	C	C
215/60R16	95H	6½J	221	664	690	1521	300	44	480 AA	71	C	C
215/60R16	99H XL	6½J	221	664	775	1709	340	50	480 AA	72	C	C
215/60R16	99V XL	6½J	221	664	775	1709	340	50	480 AA	72	C	C
225/55ZR16	99W XL	7J	233	654	775	1709	340	50	480 AA	72	C	C
225/50ZR16	96W XL	7J	233	632	710	1565	340	50	480 AA	72	C	C
225/60R16	98H	6½J	228	676	750	1653	300	44	480 AA	71	C	C

TIRE SIZE	LOAD INDEX/SPEED SYMBOL	STD. RIM (inch)	SECTION WIDTH (mm)	OVERALL DIAMETER (mm)	MAX LOAD (KGS)	MAX LOAD (lbs)	MAX PRESSURE (PKa)	MAX PRESSURE (PSI)	UTQG			
17 inch'												
205/40ZR17	84W XL	7½J	212	596	500	1102	340	50	480 AA	72	C	D
205/45ZR17	88W XL	7J	206	616	560	1235	340	50	480 AA	72	C	D
205/50ZR17	93W XL	6½J	214	638	650	1433	340	50	480 AA	72	C	D
205/55ZR17	95W XL	6½J	214	658	690	1521	340	50	480 AA	72	C	C
215/40ZR17	87W XL	7½J	218	604	545	1201	340	50	480 AA	72	C	D
215/45ZR17	91W XL	7J	213	626	615	1356	340	50	480 AA	72	C	D
215/50ZR17	95W XL	7J	226	648	690	1521	340	50	480 AA	72	C	C
215/55ZR17	94W	7J	226	668	670	1477	300	44	480 AA	71	C	D
215/55ZR17	98W XL	7J	226	668	750	1653	340	50	480 AA	72	C	C
225/45ZR17	94W XL	7½J	225	634	670	1477	340	50	480 AA	72	C	D
225/45ZR17	94Y XL	7½J	225	634	670	1477	340	50	480 AA	72	C	D
225/50ZR17	98W XL	7J	233	658	750	1653	340	50	480 AA	72	C	C
225/55ZR17	101W XL	7J	233	680	825	1819	340	50	480 AA	72	C	C
235/45ZR17	97W XL	8J	236	644	730	1609	340	50	480 AA	72	C	C
235/55ZR17	103W XL	7½J	245	690	875	1929	340	50	480 AA	72	C	C
245/40ZR17	95W XL	8½J	248	628	690	1521	340	50	480 AA	72	C	C
245/45ZR17	99W XL	8J	243	652	775	1709	340	50	480 AA	72	C	C
18 inch'												
215/35ZR18	84W XL	8½J	218	607	500	1102	340	50	480 AA	72	C	D
225/40ZR18	92W XL	8J	230	637	630	1389	340	50	480 AA	72	C	D
225/40ZR18	92Y XL	8J	230	637	630	1389	340	50	480 AA	72	C	D
225/45ZR18	95W XL	7½J	225	659	690	1521	340	50	480 AA	72	C	C
235/40ZR18	95W XL	8½J	241	645	690	1521	340	50	480 AA	72	C	C
235/45ZR18	98W XL	8J	236	669	750	1653	340	50	480 AA	72	C	C
235/45ZR18	94W	8J	236	669	670	1477	350	51	480 AA	71	C	D
235/50ZR18	97W	7½J	245	693	730	1609	350	51	480 AA	71	C	C
245/40ZR18	97W XL	8½J	248	653	730	1609	340	50	480 AA	72	C	C
245/45ZR18	100W XL	8J	243	677	800	1764	340	50	480 AA	72	C	C
255/45ZR18	103W XL	8½J	255	687	875	1929	340	50	480 AA	73	C	C
19 inch'												
225/35ZR19	88 W XL	8J	230	641	560	1235	340	50	480AA	72	C	D
235/35ZR19	91 W XL	8½J	241	647	615	1356	340	50	480AA	72	C	D
245/35ZR19	93 W XL	8½J	248	655	650	1433	340	50	480AA	72	C	D
265/30ZR19	93 W XL	9½J	271	643	650	1433	340	50	480AA	73	C	D
275/30ZR19	96 W XL	9½J	278	649	710	1565	340	50	480AA	73	C	C
22 inch'												
295/25ZR22	97 W XL	10½J	301	707	730	1609	340	50	480AA	75	B	C



Outside with wide ribs and closed shoulder for vehicle responsiveness and cornering performance. Inside with wide grooves and high sipe density for braking, acceleration and maximizing wet/snow evacuation.



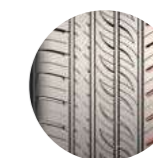
Jointless "0" degree spiral nylon cover and wide steel belts for high driving safety, comfort and durability.



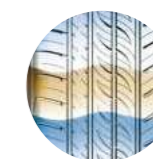
Jointless mono strand bead wire and hard bead filler strengthen the link between tire and rim for precise driving experience.



High-grip silica tread compound delivers exceptional braking and handling in wet and dry conditions.



The walls of the outside rib carved with small channels to reduce driving noise.



5-variable pitch alignment for a quiet driving environment.



TIRE SIZE	LOAD INDEX/ SPEED SYMBOL	STD. RIM (inch)	SECTION WIDTH (mm)	OVERALL DIAMETER (mm)	MAX LOAD (KGS) (lbs)	MAX PRESSURE KPa PSI	UTQG			
16 inch'										
205/55R16	94 V XL	6½J	214	632	670 1477	340 50	420AA	70	B	C

TIRE SIZE	LOAD INDEX/ SPEED SYMBOL	STD. RIM (inch)	SECTION WIDTH (mm)	OVERALL DIAMETER (mm)	MAX LOAD (KGS) (lbs)	MAX PRESSURE KPa (PSI)	UTQG			
16 inch										
205/55ZRF16	91W	6½J	214	632 615	1356 300	44	480AA	71	C	D
17 inch'										
205/55ZRF17	91W	6½J	214	658 615	1356 300	44	480AA	71	C	D
225/45ZRF17	94W XL	7½J	225	634 670	1477 340	50	480AA	72	B	D
225/50ZRF17	94W	7J	233	658 670	1477 300	44	480AA	71	B	D
225/55ZRF17	97W	7J	233	680 730	1609 300	44	480AA	71	B	D

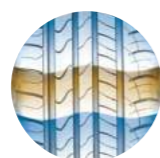


GREEN XP2

SAFETY XF8



Multi-arc tread design provides superior manoeuvrability.



Technology used to reduce tyre noise.



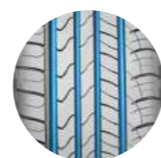
Silicon formula improves road grip.



Decreased tread block rigidity efficiently reduces the noise between the tread and the road surface to increase driving comfort.



Big block pattern design improves tyre rigidity.



Four longitudinal grooves and wide draining design provide brilliant drainage performance and manoeuvrability.



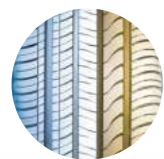
No more delays or being stranded on remote highways due to a flat tire.



Helps to avoid accidents caused by the loss of control from punctures or air leaks, increasing



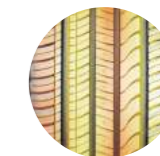
VANTAGE XU1



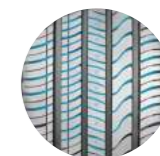
Asymmetric tread design with tiny internal pattern for better road grip and external big block for maximizing ground contact.

TIRE SIZE	LOAD INDEX/ SPEED SYMBOL	STD. RIM (inch)	SECTION WIDTH (mm)	OVERALL DIAMETER (mm)	MAX LOAD (KGS)	MAX PRESSURE (lbs)	MAX PRESSURE (PKa)	MAX PRESSURE (PSI)	UTQG	
16 inch'										
185/50R16	81 V	6J	194	592	462	1019	300	44	480AA	70 C D
195/45R16	84 V XL	6½J	195	582	500	1102	340	50	480AA	72 C D
205/45ZR16	87 W XL	7J	206	590	545	1201	340	50	480AA	72 C D
NEW 215/45ZR16	90 W	7J	213	600	600	1323	340	50	480AA	72 B D
225/50ZR16	96 W XL	7J	233	632	710	1565	340	50	480AA	72 B C
17 inch'										
205/40ZR17	84 W XL	7½J	212	596	500	1102	340	50	480AA	72 C D
205/45ZR17	88 W XL	7J	206	616	560	1235	340	50	480AA	72 C D
205/50ZR17	93 W XL	6½J	214	638	650	1433	340	50	480AA	72 C C
205/55ZR17	95 W XL	6½J	214	658	690	1521	340	50	480AA	72 C C
215/40ZR17	87 W XL	7½J	218	604	545	1201	340	50	480AA	72 B D
215/45ZR17	91 W XL	7J	213	626	615	1356	340	50	480AA	72 B C
215/50ZR17	95 W XL	7J	226	648	690	1521	340	50	480AA	72 B C
215/55ZR17	94 W XL	7J	226	668	670/750	1477/1653	300/340	44/50	480AA	71 B C
215/55ZR17	98 W XL	7J	226	668	670/750	1477/1653	300/340	44/50	480AA	72 B C
225/45ZR17	94 W XL	7½J	225	634	670	1477	340	50	480AA	72 B C
225/45ZR17	94 Y XL	7½J	225	634	670	1477	340	50	480AA	72 B C
225/50ZR17	98 W XL	7J	233	658	750	1653	340	50	480AA	72 B C
225/55ZR17	101 W XL	7J	233	680	825	1819	340	50	480AA	72 B C
235/45ZR17	97 W XL	8J	236	644	730	1609	340	50	480AA	72 B C
235/50R17	100 W XL	7½J	245	668	800	1764	340	50	480AA	72 B C
235/55ZR17	103 W XL	7½J	245	690	875	1929	340	50	480AA	72 B C
245/40ZR17	95 W XL	8½J	248	628	690	1521	340	50	480AA	72 B C
245/45ZR17	99 W XL	8J	243	652	775	1709	340	50	480AA	72 B C
20 inch'										
NEW 235/45ZR20	100 W XL	8J	236	720	800	1764	340	50	480AA	72 B C
NEW 255/35ZR20	97 Y XL	9J	260	686	730	1609	340	50	480AA	73 B C
NEW 255/40ZR20	101 Y XL	9J	260	712	825	1819	340	50	480AA	73 B C
NEW 265/40ZR20	104 Y XL	9½J	271	720	900	1984	340	50	480AA	73 B C
NEW 275/35ZR20	102 Y XL	9½J	278	700	850	1874	340	50	480AA	73 B C

TIRE SIZE	LOAD INDEX/ SPEED SYMBOL	STD. RIM (inch)	SECTION WIDTH (mm)	OVERALL DIAMETER (mm)	MAX LOAD (KGS)	MAX PRESSURE (lbs)	MAX PRESSURE (PKa)	MAX PRESSURE (PSI)	UTQG	
18 inch'										
215/35ZR18	84 W XL	7½J	218	607	500	1102	340	50	480AA	72 B D
215/45ZR18	93W XL	7J	213	651	650	1433	340	50	480AA	72 B C
225/40ZR18	92 W XL	8J	230	637	630	1389	340	50	480 AA	72 B C
225/40ZR18	92 Y XL	8J	230	637	630	1389	340	50	480 AA	72 B C
225/45ZR18	95 W XL	7½J	225	659	690	1521	340	50	480 AA	72 B C
225/50ZR18	95 W	7J	233	683	690	1521	300	44	480AA	71 B C
235/40ZR18	95 W XL	8½J	241	645	690	1521	340	50	480 AA	72 B C
235/45ZR18	94 W	8J	236	669	670	1477	350	51	480 AA	71 B C
235/45ZR18	98 W XL	8J	236	669	750	1653	340	50	480 AA	72 B C
235/45ZR18	98 Y XL	8J	236	669	750	1653	340	50	480 AA	72 B C
235/50ZR18	97 W	7½J	245	693	730	1609	350	51	480 AA	71 B C
245/40ZR18	97 W XL	8½J	248	653	730	1609	340	50	480 AA	72 B C
245/45ZR18	100W XL	8J	243	677	800	1764	340	50	480 AA	72 B C
245/50ZR18	104W XL	7½J	253	703	900	1984	340	50	480AA	72 B C
255/45ZR18	103W XL	8½J	255	687	875	1929	340	50	480 AA	73 B C
NEW 255/40ZR18	99 Y XL	9J	260	661	775	1709	340	50	480AA	73 B C
NEW 265/35ZR18	97 Y XL	9½J	271	643	730	1609	340	50	480AA	73 B C
19 inch'										
225/35ZR19	88W XL	8J	230	641	560	1235	340	50	480 AA	72 B D
NEW 225/45ZR19	96W XL	7½J	225	685	710	1565	340	50	480AA	72 B C
225/55R19	103V XL	7J	233	731	875	1929	340	50	480AA	72 B C
NEW 235/35ZR19	91W XL	8½J	241	647	615	1356	340	50	480AA	72 B C
NEW 235/40ZR19	96Y XL	8½J	241	671	710	1565	340	50	480AA	72 B C
235/50ZR19	103W XL	7½J	245	719	875	1929	340	50	480AA	72 B C
245/35ZR19	93W XL	8½J	248	655	650	1433	340	50	480AA	72 B C
245/40ZR19	98W XL	8½J	248	679	750	1653	340	50	480AA	72 B C
245/45ZR19	102W XL	8J	243	703	850	1874	340	50	480AA	72 B C
255/40ZR19	100Y/W XL	9J	260	687	800	1764	340	50	480AA	73 B C
255/45ZR19	104Y/W XL	8½J	255	713	900	1984	340	50	480AA	73 B C
265/30ZR19	93W XL	9½J	271	643	650	1433	340	50	480AA	73 B C
275/30ZR19	96W XL	9½J	278	649	710	1565	340	50	480AA	73 B C
275/35ZR19	100Y/W XL	9½J	278	675	800	1764	340	50	480AA	73 B C
275/40ZR19	105Y XL	9½J	278	703	925	2039	340	50	480AA	73 B C
20 inch'										
245/30ZR20	90W XL	8½J	248	656	600	1323	340	50	480AA	72 B D
245/35ZR20	95 W XL	8½J	248	680	690	1521	340	50	480 AA	72 B C
245/45ZR20	103Y XL	8J	243	728	875	1929	340	50	480AA	72 B C
21 inch'										
295/40ZR21	111YXL	10½J	301	769	1090	2403	340	50	480AA	74 B C
22 inch'										
295/25ZR22	97 W XL	10½J	301	707	730	1609	340	50	480AA	74 B C



Special tread design brings greater lateral rigidity and longitudinal flexibility



The optimal distribution of the tread pattern blocks and grooves achieves optimum balance of control, giving low noise and driving comfort.

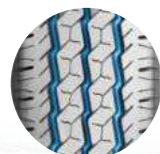


Long mileage and driving comfort



BRAWN XC1

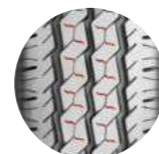
TIRE SIZE	LOAD INDEX/ SPEED SYMBOL	STD. RIM (inch)	SECTION WIDTH (mm)	OVERALL DIAMETER (mm)	MAX LOAD (KGS)	MAX PRESSURE (lbs)	(PKa)	(PSI)			
12 inch'											
145/80R12LT 6PR 80/78N 4.00B		145	537	450/425	992/937	350	50	72	C	E	
13 inch'											
155R13C 8PR 90/88Q 4.50B		157	578	600/560	1323/1235	450	65	71	D	D	
165R13C 8PR 94/93S 4.50B		167	596	670/650	1477/1433	450	65	71	D	D	
14 inch'											
165/14C 8PR 97/95S 4½J		167	622	730/690	1609/1521	450	65	71	D	D	
175R14C 8PR 99/97 R 5J		177	636	775/730	1710/1610	450	65	71	D	D	
185R14C 8PR 102/100R 5½J		188	650	850/800	1875/1765	450	65	71	C	D	
185R14C 6PR 97/95 R 5½J		189	652	730/690	1610/1520	350	51	71	C	D	
195R14C 8PR 106/104R 5½J		198	666	950/900	2095/1985	450	65	71	C	D	
195R14C(wsw) 8PR 106/104R 5½J		198	666	950/900	2095/1985	450	65	71	C	D	
15 inch'											
195R15C 8PR 106/104R 5½J		198	690	950/900	2095/1985	450	65	71	C	D	
195R15C (wsw) 8PR 106/104R 5½J		198	690	950/900	2095/1985	450	65	71	C	D	
195/70R15C 8PR 104/102R 6J		201	655	900/850	1985/1875	450	65	71	C	D	
205/70R15C 8PR 106/104R 6J		209	669	950/900	2095/1985	450	65	71	C	D	
215R15C 8PR 111/109R 6J		218	724	1090/1030	2405/2270	450	65	71	C	D	
215/65R15C 6PR 104/102T 6½J		221	661	900/850	1985/1875	375	55	71	C	D	
215/70R15C 8PR 109/107R 6½J		221	683	1030/975	2270/2150	450	65	71	C	D	
225/70R15C 8PR 112/110R 6½J		228	697	1120/1060	2470/2335	450	65	71	C	D	
225/70R15C (wsw) 8PR 112/110R 6½J		228	697	1120/1060	2470/2335	450	65	71	C	D	
16 inch'											
185/75R16C 8PR 104/102R 5J		184	684	900/850	1985/1875	475	69	71	C	D	
195/60R16C 6PR 99/97 T 6J		201	640	775/730	1710/1610	375	55	71	C	D	
195/65R16C 8PR 104/102T 6J		201	660	900/850	1985/1875	475	69	71	C	D	
195/75R16C 8PR 107/105R 5½J		196	698	975/925	2150/2040	475	69	71	C	D	
205/65R16C 8PR 107/105T 6J		209	672	975/925	2150/2040	475	69	71	C	D	
205/75R16C 8PR 110/108R 5½J		203	714	1060/1000	2335/2205	475	69	71	C	D	
215/60R16C 6PR 103/101T 6½J		221	664	875/825	1930/1820	375	55	71	C	D	
215/60R16C 8PR 108/106T 6½J		221	664	1000/950	2205/2095	475	69	71	C	D	
215/65R16C 8PR 109/107T 6½J		221	686	1030/975	2270/2150	475	69	71	C	D	
215/70R16C 6PR 108/106R 6½J		221	708	1000/950	2205/2095	375	55	71	C	D	
215/75R16C 8PR 113/111R 6J		216	728	1150/1090	2535/2405	475	69	71	C	D	
225/65R16C 8PR 112/110T 6½J		228	698	1120/1060	2470/2335	475	69	71	C	D	
235/65R16C 8PR 115/113T 7J		240	712	1215/1150	2680/2535	475	69	71	C	D	



Closed shoulder design provides superior lateral rigidity, traction and braking capacity



zigzag design provides excellent grip.



The middle big blocks pattern and shoulder transverse pattern increase control stability and running miles

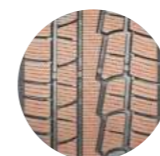


Three longitudinal grooves provide excellent draining performance

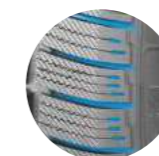
TIRE SIZE	LOAD INDEX/ SPEED SYMBOL	STD. RIM (inch)	SECTION WIDTH (mm)	OVERALL DIAMETER (mm)	MAX LOAD (KGS)	MAX PRESSURE (lbs)	(PKa)	(PSI)
13 inch'								
ST175/80R13 6PR 91/87L 5J		177	610	615/545	1360/1200	350	50	
14 inch'								
ST205/75R14 6PR 100/96L 5½J		203	664	800/710	1760/1570	350	50	
ST215/75R14 6PR 102/98L 6J		216	678	850/750	1870/1650	350	50	
15 inch'								
ST205/75R15 6PR 101/97L 5½J		203	689	825/730	1820/1610	350	50	
ST205/75R15 8PR 107/102L 5½J		203	689	975/850	2150/1870	450	65	
ST225/75R15 8PR 113/108L 6J		223	719	1150/1000	2540/2200	450	65	
ST225/75R15 10PR 117/112L 6J		223	719	1285/1120	2830/2470	550	80	
16 inch'								
ST235/80R16 10PR 123/119L 6½J		235	782	1550/1360	3420/3000	550	80	
ST235/85R16 8PR 121/117L 6½J		235	806	1450/1285	3200/2830	450	65	
ST235/85R16 10PR 125/121L 6½J		235	806	1650/1450	3640/3200	550	80	



TRAILER XT2



Good grip on icy and snowy roads.



Wide double groove design helps avoid side slippage.



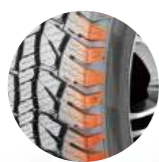
X-TERRAIN XT1

TIRE SIZE	LOAD INDEX/ SPEED SYMBOL	STD. RIM (inch)	SECTION WIDTH (mm)	OVERALL DIAMETER (mm)	MAX LOAD (KGS)	MAX PRESSURE (lbs)	MAX PRESSURE (PKa)	(PSI)	UTQG			
15 inch'												
LT215/75R15	6PR 100/97 S	6J	216	703	800/730	1765/1610	350	51	72	C	D	
LT225/75R15	6PR 102/99 S	6J	223	719	850/775	1875/1710	350	51	72	C	D	
LT235/75R15	6PR 104/101R	6½J	235	733	900/825	1985/1820	350	50	72	C	D	
31X10.50R15LT	6PR 109 R	8½J	268	775	1030	2270	350	50	72	B	D	
16 inch'												
205/80R16	104S	5½J	203	734	900	1984	340	50	520AA	71	C	D
205R16C	8PR 110/108R	6J	208	736	1060/1000	2337/2205	450	65	72	C	D	
LT215/85R16	10PR 115/112R	6J	216	772	1215/1120	2680/2470	550	80	72	C	D	
LT225/75R16	10PR 115/112R	6J	223	744	1215/1120	2680/2470	550	80	72	C	D	
235/70R16	106 T	7J	240	736	950	2094	350	51	520AA	71	C	D
LT235/85R16	10PR 120/116R	6½J	235	806	1380/1260	3021/2778	550	80	72	C	D	
245/70R16	107 T	7J	248	750	975	2149	350	51	520AA	71	C	D
LT245/75R16	10PR 120/116R	7J	248	774	1380/1260	3042/2778	550	80	72	B	D	
265/70R16	112 T	8J	272	778	1120	2469	350	51	520AA	72	C	D
LT265/75R16	10PR 120/117R	7½J	267	804	1400/1285	3085/2835	550	80	72	B	D	
LT265/75R16	10PR 123/120R	7½J	267	804	1550/1400	3415/3085	550	80	72	B	D	
17 inch'												
265/65R17	112 T	8J	272	776	1120	2469	350	51	520AA	72	C	D
265/70R17	115 T	8J	272	804	1215	2679	350	51	520AA	72	C	D
18 inch'												
265/60R18	110 T	8J	272	775	1060	2337	350	51	520AA	72	C	D
20 inch'												
265/50R20	110 T XL	8½J	277	774	1090	2403	340	50	520AA	72	C	D

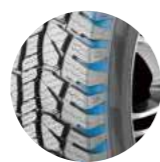
TIRE SIZE	PR	LOAD INDEX/ SPEED SYMBOL	STD. RIM (inch)	SECTION WIDTH (mm)	OVERALL DIAMETER (mm)	MAX LOAD (KGS)	MAX PRESSURE (lbs)	MAX PRESSURE (PKa)	(PSI)
16 inch'									
7.00R16LT 12PR	115/110N	5.50F	200	775	1215/1060	2680/2335	670	97	
7.00R16LT 8PR	107/102N	5.50F	200	775	975/850	2150/1875	460	67	
7.00R16LT 6PR	101/96	N 5.50F	200	775	825/710	1820/1565	350	50	
7.50R16LT 14PR	122/118N	6.00G	215	805	1500/1320	3305/2910	770	112	
7.50R16LT 14PR	120/118N	6.00G	215	805	1400/1320	3085/2910	770	112	



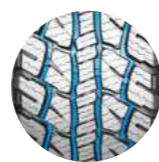
GUARD XT3



Strong carcass and convex sidewall design ensures superior wear resistance



Wide open shoulder design provides superior lateral rigidity, traction and braking capacity



Four curved grooves increase grip and self-cleaning capacity on irregular road conditions such as mud and gravel



Zigzag sheet steel provides excellent ground grasping and driving comfort



Optimized wet and dry performance, highly efficient in preventing side wear, and longer mileage.



Strengthened tire structure and reinforced carcass ensure greater load capacity.



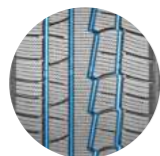
ARCTIC XS1

TIRE SIZE	LOAD INDEX/ SPEED SYMBOL	STD. RIM (inch)	SECTION WIDTH (mm)	OVERALL DIAMETER (mm)	MAX LOAD (KGS)	MAX LOAD (lbs)	MAX PRESSURE (PKa)	MAX PRESSURE (PSI)			
13 inch'											
165/70R13	79T	5.00B	170	562	437	963	300	44	71	E	D
14 inch'											
175/70R14	84 T	5J	177	602	500	1102	300	44	71	E	D
185/70R14	88 T	5½J	189	616	560	1235	300	44	71	E	D
195/60R14	86 T	6J	201	590	530	1168	300	44	71	E	D
175R14C	8PR 99/97 R	5J	177	636	775/730	1710/1610	450	65	72	E	D
185R14C	8PR 102/100R	5½J	189	652	850/800	1875/1765	450	65	72	E	D
15 inch'											
195/60R15	88 T	6J	201	615	560	1235	300	44	71	E	D
195/65R15	91 T	6J	201	635	615	1356	300	44	71	E	D
205/70R15	96 S	6J	209	669	710	1565	300	44	71	E	D
215/75R15	100S	6J	216	703	800	1764	300	44	71	E	D
235/75R15	105S	6½J	235	733	925	2039	350	51	71	D	D
16 inch'											
195/60R16	89 T	6J	201	640	580	1279	300	44	71	E	D
205/55R16	91 H	6½J	214	632	615	1356	300	44	71	E	D
215/70R16	100 S	6½J	221	708	800	1764	350	51	71	E	D
235/70R16	106 S	7J	240	736	950	2094	350	51	71	D	D
17 inch'											
225/45R17	94 H XL	7½J	225	634	670	1477	340	50	71	D	D

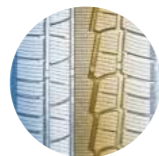
TIRE SIZE	LOAD INDEX/ SPEED SYMBOL	STD. RIM (inch)	SECTION WIDTH (mm)	OVERALL DIAMETER (mm)	MAX LOAD (KGS)	MAX LOAD (lbs)	MAX PRESSURE (PKa)	MAX PRESSURE (PSI)			
13 inch'											
175/70R13	82 T	5.00B	177	576	475	1047	300	44	70	D	D
14 inch'											
175/65R14	82 T	5J	177	584	475	1047	300	44	70	D	D
185/60R14	82 T	5½J	189	578	475	1047	300	44	70	D	D
185/65R14	86 T	5½J	189	596	530	1168	300	44	70	D	D
15 inch'											
185/60R15	84 T	5½J	189	603	500	1102	300	44	70	D	D
185/65R15	88 T	5½J	189	621	560	1235	300	44	70	D	D
195/55R15	85 H	6J	201	595	515	1135	300	44	70	D	D
195/60R15	88 H	6J	201	615	560	1235	300	44	70	D	D
195/65R15	91 T	6J	201	635	615	1356	300	44	70	D	D
205/65R15	94 H	6J	209	647	670	1477	300	44	70	D	D
16 inch'											
205/55R16	91 H	6½J	214	632	615	1356	300	44	70	D	D
205/60R16	92 H	6J	209	652	630	1389	300	44	70	D	D
215/55R16	97 H XL	7J	226	642	730	1609	340	50	70	D	D
215/60R16	99 H XL	6½J	221	664	775	1709	340	50	70	D	D
17 inch'											
225/45R17	94 H XL	7½J	225	634	670	1477	340	50	70	D	D



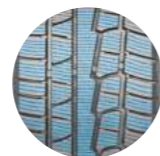
ARCTIC S3



Four longitudinal grooves improve draining performance and grip capacity on snow



Asymmetric tread design improves cornering manoeuvrability.



High density and uniform distribution on silica nanoparticles provides a silent ride with the best ride comfort.



3D sheet steel design provides excellent ground grasping capacity on ice and snow



Reinforced center rib ensures better handling and high speed performance. Multiple sipes enhance grip and braking force in snow and ice.



Gradually widening lateral grooves and zigzagged longitudinal grooves improve self-cleaning and draning capabilities.



TIRE SIZE	LOAD INDEX/ SPEED SYMBOL	STD. RIM (inch)	SECTION WIDTH (mm)	OVERALL DIAMETER (mm)	MAX LOAD (KGS)	MAX LOAD (lbs)	MAX PRESSURE (PKa)	MAX PRESSURE (PSI)		
13 inch'										
175/70R13	82 T	5.00B	177	576	475	1047	300	44	71	D D
14 inch'										
155/65R14	75 T	4½J	157	558	387	853	300	44	71	D D
165/70R14	81 T	5J	170	588	462	1019	300	44	71	D D
175/65R14	82 T	5J	177	584	475	1047	300	44	71	D D
185/60R14	82 T	5½J	189	578	475	1047	300	44	71	D D
185/65R14	86 T	5½J	189	596	530	1168	300	44	71	D D
15 inch'										
175/65R15	84 T	5J	177	609	500	1102	300	44	71	D D
185/55R15	86 H XL	6J	194	585	530	1168	340	50	71	D D
185/60R15	84 T	5½J	189	603	500	1102	300	44	71	D D
185/65R15	88 T	5½J	189	621	560	1235	300	44	71	D D
195/50R15	86 H XL	6J	201	577	530	1168	340	50	72	D D
195/55R15	85 H	6J	201	595	515	1135	300	44	72	D D
195/60R15	88 H	6J	201	615	560	1235	300	44	72	D D
195/65R15	91 T	6J	201	635	615	1356	300	44	72	D D
205/65R15	94 H	6J	209	647	670	1477	300	44	72	D D
195/70R15C 8PR104/102 R	6J	201	655	900/850	1985/1875	450	65	73	C D	
215/70R15C 8PR109/107 R 6½J	221	683	1030/975	2270/2150	450	65	73	C D		
225/70R15C 8PR112/110 R 6½J	228	697	1120/1060	2470/2335	450	65	73	C D		
16 inch'										
195/55R16	91H XL	6J	201	620	615	1356	340	50	72	D D
205/55R16	91 H	6½J	214	632	615	1356	300	44	72	D D
205/60R16	92 H	6J	209	652	630	1389	300	44	72	D D
215/55R16	97 H XL	7J	226	642	730	1609	340	50	72	D D
215/60R16	99 H XL	6½J	221	664	775	1709	340	50	72	D D
215/65R16	98 H	6½J	221	686	750	1653	300	44	72	D D
195/65R16C 8PR 104/102 R	6J	201	660	900/850	1985/1875	475	69	73	C D	
195/75R16C 8PR 107/105 R 5½J	196	698	975/925	2150/2040	475	69	73	C D		
205/65R16C 8PR 107/105 R	6J	209	672	975/925	2150/2040	475	69	73	C D	
215/65R16C 8PR 109/107 R 6½J	221	686	1030/975	2270/2150	475	69	73	C D		
235/65R16C 8PR 115/113 R	7J	240	712	1215/1150	2680/2535	475	69	73	B D	
17 inch'										
205/50R17	93 H XL	6½J	214	638	650	1433	340	50	72	D D
225/45R17	94 H XL	7½J	225	634	670	1477	340	50	72	C D
225/50R17	98 H XL	7J	233	658	750	1653	340	50	72	C D
225/55R17	101 H XL	7J	233	680	825	1819	340	50	72	C D

TIRE SIZE	LOAD INDEX/ SPEED SYMBOL	STD. RIM (inch)	SECTION WIDTH (mm)	OVERALL DIAMETER (mm)	MAX LOAD (KGS)	MAX LOAD (lbs)	MAX PRESSURE (PKa)	MAX PRESSURE (PSI)		
17 inch'										
215/45R17	91 H XL	7J	213	626	615	1356	340	50	72	D D
215/50R17	95 H XL	7J	226	648	690	1521	340	50	72	D D
215/55R17	98 T XL	7J	226	668	750	1653	340	50	72	D D
235/55R17	99 S	7½J	245	690	775	1709	300	44	72	D D
18 inch'										
225/45R18	95 S XL	7½J	225	659	690	1521	340	50	72	D D
225/50R18	99 T XL	7J	233	683	775	1709	340	50	72	D D
235/45R18	98 S XL	8J	236	669	750	1653	340	50	72	D D
245/45R18	96 S	8J	243	677	710	1565	300	44	72	D D
19 inch'										
255/40R19	100 T XL	9J	260	687	800	1764	340	50	72	D D
NEW 275/35R19	100 V XL	9½J	278	675	800	1764	340	50	72	D D
20 inch'										
255/50R20	109 S XL	8J	265	764	1030	2271	340	50	73	D D



ARCTIC S6



Tiny grooves absorb and store water which is dispersed on the surface of the ice to enhance grip.



arctic s-8



Upgraded silica compound ensures the tread maintains its softness in low temperatures to provide first-class safety. Lateral serrated sipe design on tread improves skid resistance.



Asymmetric pattern and three main grooves provide great maneuverability. Tread Design



ARCTIC S-9

TIRE SIZE	LOAD INDEX/ SPEED SYMBOL	STD. RIM (inch)	SECTION WIDTH (mm)	OVERALL DIAMETER (mm)	MAX LOAD (KGS)	MAX LOAD (lbs)	MAX PRESSURE (PKa)	MAX PRESSURE (PSI)			
16 inch											
215/75R16LT8PR	107/103R	6J	216	728	975/875	2150/1930	450	65	72	D	C
265/70R16	112 T	8J	272	778	1120	2469	300	44	73	D	D
17 inch											
215/60R17	96 S	6½J	221	690	710	1565	300	44	72	D	D
225/60R17	99 S	6½J	228	702	775	1709	300	44	72	D	D
225/65R17	102 S	6½J	228	724	850	1874	300	44	72	D	D
235/65R17	104 T	7J	240	738	900	1984	300	44	72	D	D
265/65R17	112 S	8J	272	776	1120	2469	300	44	73	D	D
18 inch											
215/55R18	99 H XL	7J	226	693	775	1709	340	50	72	D	D
225/55R18	98 T	7J	233	705	750	1653	300	44	72	D	D
225/60R18	100 S	6½J	228	727	800	1764	300	44	72	D	D
235/50R18	101 T XL	7½J	245	693	825	1819	340	50	72	D	D
235/55R18	100 T	7½J	245	715	800	1764	300	44	72	D	D
235/60R18	107 S XL	7J	240	739	975	2149	340	50	72	D	D
245/60R18	105 T	7J	248	751	925	2039	300	44	72	D	D
285/60R18	116 R	8½J	292	799	1250	2756	300	44	73	D	D
19 inch											
225/45R19	96 T XL	7½J	225	685	710	1565	340	50	72	D	D
235/55R19	105 T XL	7½J	245	741	925	2039	340	50	72	D	D
245/55R19	103 T	7½J	253	753	875	1929	300	44	72	D	D
20 inch											
285/50R20	112 S	9J	297	794	1120	2469	300	44	73	D	D

NEW

TIRE SIZE	LOAD INDEX/ SPEED SYMBOL	STD. RIM (inch)	SECTION WIDTH (mm)	OVERALL DIAMETER (mm)	MAX LOAD (KGS)	MAX LOAD (lbs)	MAX PRESSURE (PKa)	MAX PRESSURE (PSI)			
15 inch											
31X11.50R15LT 6PR	109Q	8½J	268	775	1030	2270	350	50			
32X11.50R15LT 6PR	113Q	9J	290	801	1150	2535	350	50			
33X12.50R15LT 6PR	108Q	10J	318	826	1000	2205	250	35			
35X12.50R15LT 6PR	113Q	10J	318	877	1150	2535	250	35			
16 inch											
LT265/70R16 8PR	117/114Q	8J	272	778	1285/1180	2835/2600	450	65			
LT265/75R16 8PR	119/116Q	7½J	267	804	1360/1250	3000/2755	450	65			
LT265/75R16 10PR	123/120Q	7½J	267	804	1550/1400	3415/3085	550	80			
LT285/75R16 6PR	116/113Q	8J	286	834	1250/1150	2755/2535	350	50			
LT285/75R16 10PR	126/123Q	8J	286	834	1700/1550	3750/3415	550	80			
LT305/70R16 8PR	118/115Q	9J	311	834	1320/1215	2910/2680	350	50			
LT305/70R16 10PR	124/121Q	9J	311	834	1600/1450	3525/3195	450	65			
LT315/75R16 8PR	121/118Q	8½J	313	878	1450/1320	3195/2910	350	50			
LT315/75R16 10PR	127/124Q	8½J	313	878	1750/1600	3860/3525	450	65			
17 inch											
LT265/70R17 10PR	121/118Q	8J	272	804	1450/1320	3195/2910	550	80			
LT285/70R17 10PR	121/118Q	8½J	292	832	1450/1320	3195/2910	550	80			



X-TERRAIN MT1



Tiny grooves absorb and store water which is dispersed on the surface of the ice to enhance grip.



The sipe design improves the tire's rigidity which reduces the possibility of deformation while driving. This makes driving more comfortable and braking at high speeds more stable.



Optimized tread formula design provides ultra-strong traction performance and puncture resistance.



Shoulder Design Open shoulder design with dilated and deepened grooves allows for easier discharge of mud when driving at low or high speeds.